

Annual Monitoring Report

2009/10

North London Joint Waste Strategy

February 2011

Introduction	4
North London Demographics	6
Waste composition	8
Municipal Waste arising	8
Waste Minimisation	10
Waste Reduction	10
Waste Reuse	11
Home Composting	13
Community Composting	13
Reuse and Recycling Centres	15
Door-to door recycling services and properties with multiple occupancies	17
Other recycling options	20
Recycling and Composting Summary	21
Disposal to landfill	23
Abandoned vehicles	24
Batteries and accumulators	25
Bulky waste	26
Non-household waste	27
Construction and demolition waste	27
Liquid wastes	28
Hazardous Waste	28
Ozone-depleting substances	30
Polychlorinated biphenyls	30
Waste disposal service implications	31
Transport implications	32

A key role for the community sector	34
Commercial and industrial Partners	35
Working with national agencies	36
Market development and regeneration	36
Strategic Environmental Assessment (SEA) monitoring	37
Further information	48

Introduction

The North London Waste Authority (NLWA) (the Authority) is the UK's second largest Waste Disposal Authority (WDA) handling around 3% of the national municipal waste -1.3 million tonnes per annum (tpa) by 2045.

For the past 15 years the Authority has managed its waste arisings predominantly through its waste treatment and disposal contract with LondonWaste Limited (LWL) and the use of an energy-from-waste (EfW) plant at Edmonton in North London.

The eight North London Authorities (the London Boroughs of Barnet, Camden, Enfield, Hackney, Haringey, Islington and Waltham Forest and the North London Waste Authority) have adopted an ambitious North London Joint Waste Strategy (NLJWS) that is consistent with both the National and Mayor for London's Waste Strategies. The NLJWS sets a framework for the management of municipal waste in North London and seeks

A recycling-led solution with the aim of doubling recycling and composting rates to 50% by 2020.

A reduction of biodegradable material going to landfill, consistent with our Landfill Allowances and so that the current proportion of material that currently goes to landfill is reduced from 36% to 15%.

These ambitions are very challenging. North London is a densely populated area and a very mobile population – traditionally a difficult combination of circumstances to deliver high recycling rates.

This annual report is the second to be published showing the performance of the eight Partners towards achieving the objectives and targets set in the NLJWS.

The draft NLJWS was submitted to the Mayor of London in September 2004 and again in 2008. It was subsequently approved by the Mayor and adopted by all the Partners.

It was deemed necessary to conduct a Strategic Environmental Assessment (SEA) of the NLJWS and so in 2007 the draft NLJWS was provided for comment to statutory consultees and the public alongside a scoping report for the SEA. Then following the SEA preliminary consultation it was again submitted to a further public consultation process during May and June of 2008 along with the final draft of the SEA Environmental Report. An updated version of the Strategy incorporating comments received from both the Mayor and the consultees and approved and adopted by all Partners was published in February 2009.

This report should be read in association with the previously published North London Joint Waste Strategy (February 2009) as it is not intended to duplicate text already published within that document. Both documents are available to view or download from the Authority's website

http://www.nlwa.gov.uk/aboutus/our_strategy

The majority of the data reported here is from WasteDataFlow, the web based system for reporting by UK Local Authorities to government. The system has been operational since 2004 but the data set is not complete for all the Partners until 2006. Hence a reporting baseline of 2006/07 has been chosen for this and subsequent reports. Additional data is derived from the Authority's records and downloaded from the Environment Agency's website

www.environment-agency.gov.uk

The shaded boxes below contain the 'implementation actions' published in the NLJWS that the Partners have agreed to report annually. Each implementation action is followed by some analysis and commentary. Implementation actions which are not reported upon in this document generally do not lend themselves to annual monitoring and review, e.g. implementation 1.B. which states that the North London Partner Authorities have agreed to a series of Aims and Objectives. The layout of the following text is the same as found in the NLJWS so that progress can be seen more easily.

North London Demographics

The total population of the North London area is now estimated by the Office of National Statistics to be 1,723,204. These people live in an estimated 696,000 households. This population has increased from an estimated 1,500,000 in 1991 and is predicted to rise by a further 150,000 by 2016 as part of a London-wide trend.

The increases in population, number of households and the possible continuation of economic prosperity of London suggest that the amount of waste generated in North London is likely to continue to grow throughout the period of this Strategy.

2.A To ensure that the Strategy matches future changes in demography, the North London Partner Authorities have agreed to continue to share demographic information where it is required for strategy development and implementation.

Table 1: Demographics of the North London area.

	2006/07 (Baseline)	2007/08	2008/09	2009/10
Population	1,679,311	1,688,286	1,701,562	1,723,204
Number of households	696,000	696,000	696,000	696,000
Dwelling stock	732,640	741,125	741,125	753,036

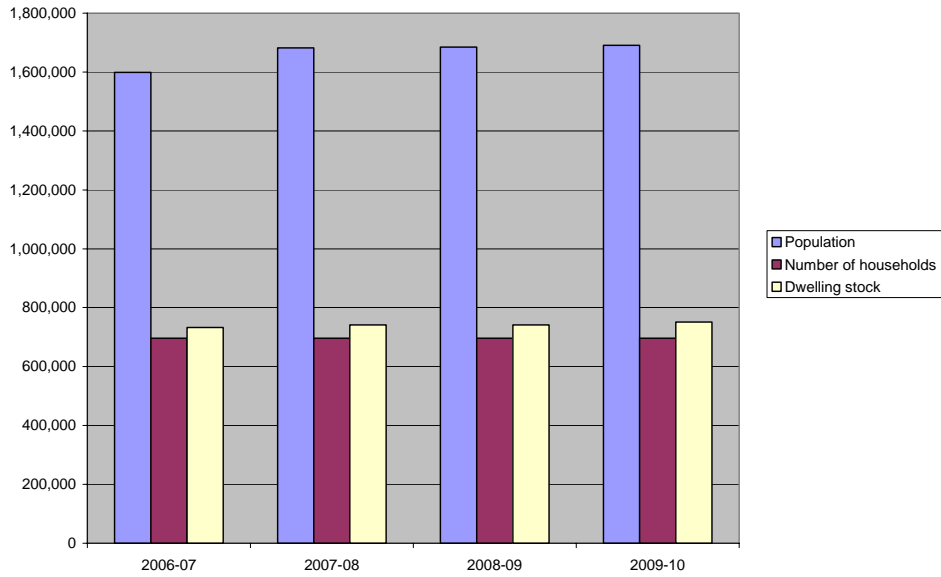
There is a small difference between the reported number of dwellings and the reported number of households. A dwelling is a discrete property and may contain more than one household or may be unoccupied and hence there is likely to be a difference in the numbers of these reported values.

The data presented in this section is supplied by the Office of National Statistics (ONS) mid-year estimates.

These numbers remain important in managing the waste arising in North London and planning services for the future.

North London has substantial areas of transient population and a relatively young demography. The London Boroughs of Camden and Islington in particular, contain relatively large proportions of people aged between 20 and 30 who are considered to be more transient than other age groups. High transience creates a considerable challenge in terms of ensuring that interaction between the Authorities and the householder through education or enforcement is consistent and effective.

Demographics of the North London area



Population density varies across the Authority area but in most areas is above the average for London which is currently 49 people per Hectare.

Table 2: Population density (people per Hectare) in the North London Boroughs.

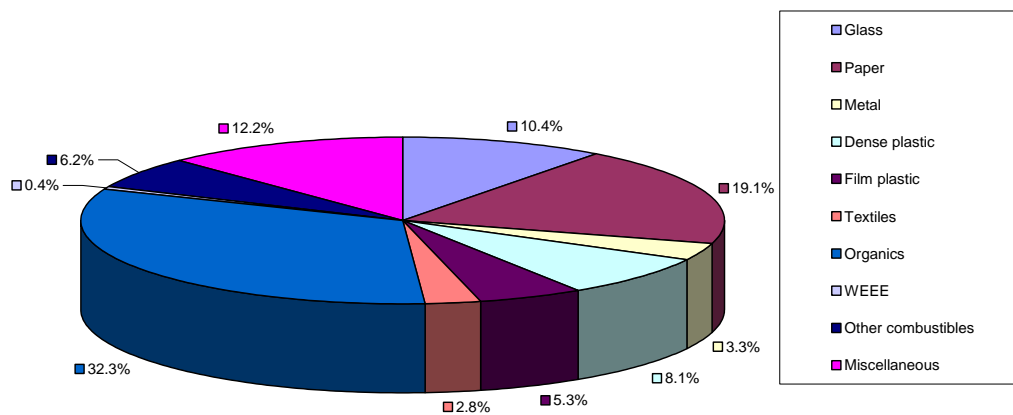
	2006/07 (Baseline)	2007/08	2008/09	2009/10
Barnet	37	38	38	38
Camden	102	103	104	105
Enfield	34	35	35	35
Hackney	109	109	110	110
Haringey	74	75	75	75
Islington	121	122	124	125
Waltham Forest	57	57	57	57
Average for North London	76	77	78	78

Waste composition

The composition of the waste stream is important in determining the amount of material that could be recycled or composted in the waste stream. It can also reflect changes in the use of materials in manufacturing over time such as improvements in the use of packaging.

The composition of the waste stream was last analysed in October 2010.

Waste composition October 2010



Municipal Waste arising

2B This Strategy employs the Prime Minister's Strategy Unit recommended growth rate for municipal waste when planning for the new waste management facilities that will be needed in North London.

Municipal waste is the total of all wastes collected by the seven waste collection Authorities in the North London area. It includes all waste collected for recycling, composting, recovery and disposal. The amount of municipal waste collected in the North London area is shown below. Historically the waste stream had increased in size every year but in recent years this trend has changed.

At the outset the North London Joint Waste Strategy employed the Prime Minister's Strategy Unit recommended growth rate of 3% growth in municipal waste until 2010 and 2.5% thereafter. Additional lower growth rates were included in the NLJWS as sensitivity analyses as it was recognised that growth may be lower than predicted.

However, as can be seen in Table 3 below the actual growth rate of waste has been in decline for several years since the strategy was published despite an increase in the population of the North London area over the same period.

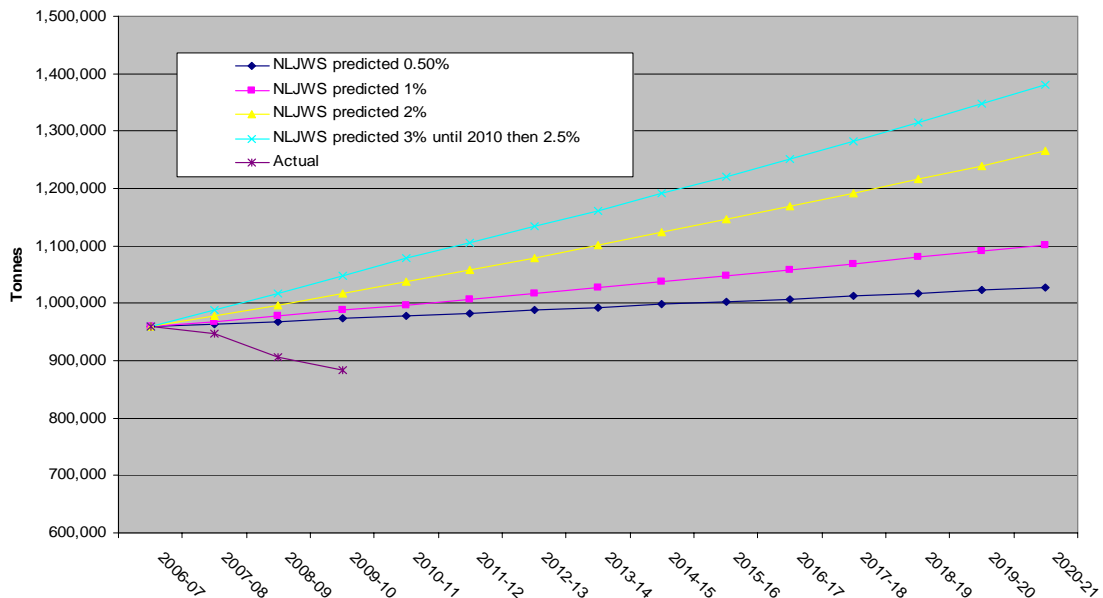
This is likely to be due to the success of waste minimisation initiatives; the impact of the landfill tax and the drive to reduce packaging as well as the most significant impact of the general decline in economic activity since 2008/09 meaning that less waste is produced than was originally predicted.

The growth rate continues to fall although this is slowing and it is expected that a more normal pattern of growth in the waste stream will resume in the future.

Table 3: Municipal Waste collected in North London.

	2006/07 (Baseline)	2007/08	2008/09	2009/10
Tonnes of municipal waste collected	958,600	947,793	905,778	883,931
Annual Growth Rate	-	-1%	-4%	-2%

Actual and predicted growth in Municipal Waste arising



Waste Minimisation

4.A2 The North London Partner Authorities will actively support Business Networks encouraging demonstrably effective waste prevention and minimisation amongst local businesses.

4.A3 The North London Partner Authorities will seek external funding or regional support to develop a packaging waste prevention campaign with local manufacturing companies.

The Partners have not specifically supported Business Networks in the last four years, but have continued to engage with businesses in a number of ways:

- During 2009/10 the Partners published a Waste Prevention Guide for Businesses. Whilst a small number of copies were printed, it was hoped that businesses would view the document electronically, so it was made available as a free download from the NLWA website. An updated version is available at the following website:
- A series of posters was also produced for businesses encouraging waste prevention.

Both the Waste Prevention Guide for businesses and the posters can be downloaded from the NLWA website

http://www.nlwa.gov.uk/yourwaste/information_for_business/waste_prevention#wpg

The Partners continue to support business initiatives to prevent and minimise waste and continue to seek external funding. Further details of external funding secured are included elsewhere in this report.

Waste Reduction

4.B1 The Partner Authorities will seek external funding to run waste prevention public awareness campaigns across North London throughout the period of this Strategy.

All waste prevention activity between 2006/07 and 2008/09 was funded directly by the Partner Authorities, whose focus at this time was on home composting (4.D1 and 4.D2 below). Although some of the Partner Authorities were included in a Waste and Resources Action Programme (WRAP) home composting scheme which provided subsidised home composting bins and associated publicity materials, during this period. The financial benefit of this support is not included here.



Since 2009 the Partner Authorities have supported the national “Love Food, Hate Waste” campaign organised by WRAP by delivering a range of activities including running events in the North London area to engage with residents and businesses to reduce the amount of food waste that is produced.

A cookery competition was also devised to encourage people to make tasty dishes using leftovers and a book was produced featuring the recipes to encourage residents reduce food waste. A free copy of the “Food Lovers Cookbook” can be downloaded here

<http://www.nlwa.gov.uk/lfhw/>

Further information on the national “Love Food, Hate Waste” campaign can be found at

www.lovefoodhatewaste.com

Details of the financial support the Partners received are shown in Section 8.D (Working with National Agencies) below

Waste Reuse

4.C2 The Partner Authorities will continue to support bids for external funding of reuse services and will seek to develop a means of rewarding effective reuse services directly through a reuse “credit”, to reflect the avoided or deferred cost of disposal.

The Partner Authorities continue to support charities and other third sector organisations through the North London Waste Authority by paying reuse and recycling credits for waste that is diverted from landfill by these organisations.

The number of organisations receiving support has increased over previous years and the amount paid is also now greater to reflect the savings made to the public sector by the work of these organisations.



Unwanted furniture collected from homes in North London is restored and then sold to other residents.

Table 4: Amount of Reuse and Recycling Credit paid

	2006/07 (Baseline)	2007/08	2008/09	2009/10
Amount of Reuse and Recycling Credit paid	£28,958	£92,001	£114,003	£148,848
Tonnes of waste attracting Reuse and Recycling Credit	466	1,714	2,062	2,613
Number of organisations receiving Reuse and Recycling Credit	6	12	11	14

Additional support provided to the Community Sector is described under objectives 8.B1 and 8.B2 below.

Home composting

4.D1 The Partner Authorities will provide a concerted and on-going promotional campaign to encourage home composting throughout the period of this strategy, offering residents purpose built bins at subsidised rates and providing support to residents wishing to compost at home.

4.D2 The Partner Authorities will aim to ensure that 25% of all residents with gardens compost at home by 2014 to divert approximately 40,000 tonnes from the waste stream.

There are an estimated 393,241 suitable properties with gardens in the North London area. By 31 March 2010, Boroughs had distributed a total of 44,453 home composting units and wormeries to residents in the area. This coverage is considerably below the aim to provide 25% of residents with home composting units. This figure does not include the number of homes that compost at home and don't have a composting unit or wormery that has been supplied by the local Authority as it is felt that the cost of a survey to assess this figure would be disproportionate to the benefit of having it.

Research conducted by the Waste and Resources Action Programme (WRAP) has found that home composting bins divert on average 150 kilograms of waste per annum. This diversion breaks down to 45 kilograms diverted from landfill and 105 kilograms diverted from garden waste collection schemes. Using this figure, the calculated waste diversion by this method is 6,668 tonnes per annum. This is considerably less than the 40,000 tonnes of waste per annum that is targeted in the NLJWS. It should be noted that, as above, this figure does not include the numbers of units that residents have purchased independently nor the amount that are composting waste without a unit, instead using a traditional "compost heap".

Community composting

4.E The Partner Authorities will actively support appropriate community compost projects in North London, particularly where these contribute to statutory compost targets, through patronage of bids for external funding, direct support and through payment of third party recycling credits.

Between 2005 and 2007 the Authority ran a Community Composting Fund. During 2006/07 the Authority distributed funding to seven community groups to support composting projects. The funding supported both the provision of shared composting facilities as well as community based kitchen waste collection schemes. Some of the money from the 2006/07 fund was carried over into 2007/08 and as a result one further project was supported, and the

remaining funding provided to the four north London boroughs which had not yet had projects in their area in receipt of support. These four boroughs then allocated the funding to local community groups. Community composting projects may also be eligible for recycling credits as reported in section 4.C2 above.

After 2007/08, the scope of the funding was expanded and the community composting fund renamed the Community Projects Fund. The Community Projects Fund is available for community based organisations in the North London area delivering composting, recycling or reuse. The amount of funding awarded to composting projects will depend upon the quality and the number of bids received and the level of funding already allocated to other activities.

During 2009/10 six community projects were funded, of which four community projects were composting initiatives; it was also decided that the scheme should cease to be funded by the North London Waste Authority and that the Boroughs themselves should make local decisions instead.

Table 5: Amount of support for community compost projects

	2006/07 (Baseline)	2007/08	2008/09	2009/10
Support for Community Compost Projects	£12,568	£12,432	£6,850	£18,972



Residents grow their own food at allotments across North London.

Reuse and Recycling Centres

- 4.G1 The Partner Authorities will provide continuously improving Reuse and Recycling Centres in excess of the minimum statutory provision throughout the period of this Strategy, which shall be freely available for the deposit of household waste by all Londoners on a reciprocal basis.
- 4.G2 The Partner Authorities will aim to achieve 60% recycling and composting diversion rates at all North London Reuse and Recycling Centres by 2015.

In the last year there was a substantial decrease in the amount of residual waste collected at Reuse and Recycling Centres and an increase in the amount of material collected for recycling and composting. The increase in the recycled tonnage and decrease in the disposal tonnage is a reversal of the trend that was seen in previous years and is likely to be due to changes in the pattern of wastes arising and improved waste management practices at the Reuse and Recycling Centres in the area.

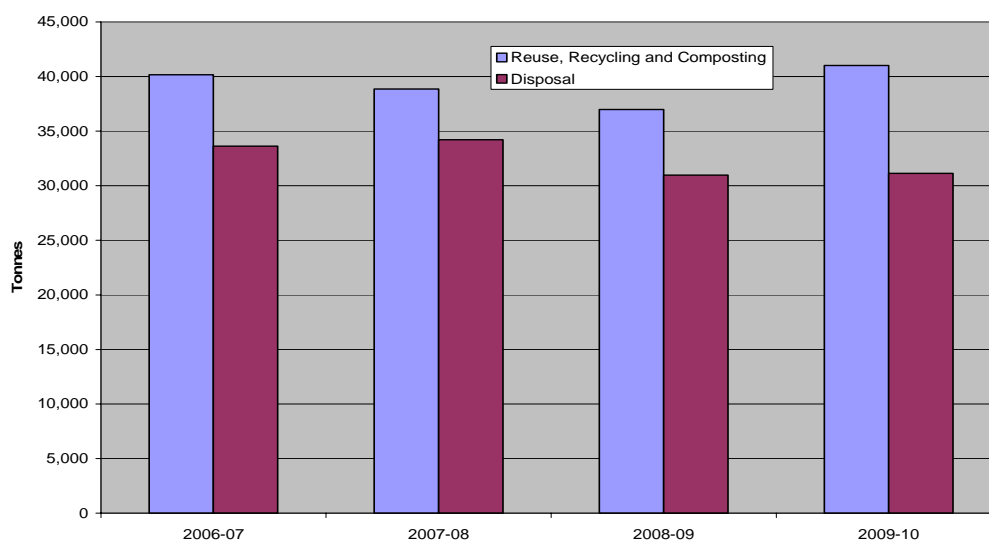


Residents depositing waste at a Reuse and Recycling Centre.

Table 6: Recycling and Composting Rates at Reuse & Recycling Centres

	2006/07 (Baseline)	2007/08	2008/09	2009/10
Total tonnage collected for reuse, recycling and composting and disposal	73,778	73,053	67,956	72,136
Reuse, Recycling and Composting tonnage	40,164	38,859	36,987	41,012
Residual tonnage for disposal	33,614	34,194	30,969	31,124
Recycling and Composting rate	54%	53%	54%	57%
Number of Reuse and Recycling Centres	9	9	9	9
Number of Reuse and Recycling Centres per 100,000 people	1	1	1	1

Waste Management at Reuse and Recycling Centres



In the North London area nine sites are provided by the seven waste collection Authorities (boroughs). All residents in the North London area have access to Reuse and Recycling Centres. The level of provision has been 1 site per 100,000 people since the North London Joint Waste Strategy was implemented. In future it is anticipated that additional sites will be opened within the North London area although at this time the locations and number of these has not been finalised.

In future the partners are considering the closure and replacement of three of the existing sites as well as the provision of two additional sites and the refurbishment of two more of the existing sites. This would result in the provision of a total of 11 modern sites.

Door-to door recycling services and properties with multiple occupancies

4.H1 The Partner Authorities will aim to provide door-to-door recycling services to 95% of relevant households and achieve 65% capture rates of targeted recycling materials during the period of this Strategy.

4.H2 The Partner Authorities will offer door-to-door collections of biodegradable waste for all relevant households where home or community composting services are not provided in the period of this Strategy.

4.I1 The Partner Authorities will work to provide all residents in multi-occupancy housing with either door-to-door collection services or a minimum of one “near entry” recycling site per 500 households as soon as possible.

4.I2 The Partner Authorities will work to achieve 65% capture rates of targeted recycling materials for recycling services serving multi-occupancy housing during the period of this Strategy.

All residents in the North London area now have access to kerbside or communal recycling collections for dry recyclables and the vast majority have access to similar collections of biodegradable waste.

Every borough now collects at least six materials from residents every week. These “targeted materials” are paper, cardboard, glass, metal cans, plastic bottles and kitchen & garden waste. In some areas residents are able to recycle additional materials as well. More materials can be recycled at Reuse and Recycling Centres and in street banks.

Table 7: Kerbside and on-street collection of dry and organics

	2006/07 (Baseline)	2007/08	2008/09	2009/10
% of residents receiving a door-to door, near entry or communal collection of dry recyclables	97%	100%	100%	100%
% of residents receiving a door-to-door, near entry or communal collection of biodegradable waste	64%	89%	93%	95%
Capture rate of dry recyclable “targeted materials”	24%	27%	27%	34%
Capture rate kitchen and garden waste “targeted materials”	18%	20%	24%	29%



Waste is collected for composting and recycling in some areas using a “split- body” vehicle.

The amount of material collected for recycling and composting at the kerbside continues to increase annually. The amount collected in on-street bring banks rose again during the last 12 months. Overall the amount of recyclable and compostable waste collected by these methods has increased annually regardless of the collection method used. This is largely due to the following factors

Introduction and roll-out of mixed food and green waste collections
Increases in the provision of estates based recycling facilities
Additional materials including plastic bottles are now collected
Increasing education and enforcement



Residents can recycle some materials by using street banks.

Although the capture rate of targeted recyclable materials at the kerbside is still below the target, the rate has increased every year as services to residents improve, more materials are targeted and more residents recycle more of their waste through Borough-run collection schemes.

Other recycling options

4.K1 The Partner Authorities will make arrangements to compost street leaves, parks and other green waste wherever practicable in the period of this Strategy.

4.K2 The Partner Authorities will work to increasingly recycle and compost more street litter and non-household biodegradable waste to ensure that the need to purchase Landfill Allowances is minimised

On-site composting by Boroughs in parks where the waste is generated keeps this waste out of the measured municipal waste stream and so the reported amounts treated by this method are lower than is actually the case. Most of the waste generated by boroughs in parks and gardens is composted “in-house” with the product being applied within the area from which the waste is generated.

It has not been necessary to purchase any tradable allowances under the landfill allowances trading scheme (LATS) as the North London Waste Authority and the constituent borough councils have increased the levels for recycling and used the Edmonton energy-from-waste facility which together ensure that sufficient waste is diverted from landfill disposal to ensure that the Authority stays within its landfill limits.

Table 8: Amounts of “other” waste that was composted or recycled

	2006/07 (Baseline)	2007/08	2008/09	2009/10
Tonnes of street leaves, parks and “other” green waste composted	1,381	1,399	627	1,074
Tonnes of street litter and “other” waste recycled	15,767	10,644	3,656	4,271
Number of Landfill Allowances purchased	0	0	0	0
Value of Landfill Allowances purchased	Nil	Nil	Nil	Nil

Recycling and Composting Summary

- 4.L1 The Partner Authorities undertake to individually achieve the statutory recycling and composting standards set by Government and to exceed these standards wherever practical.
- 4.L2 The Partners will work to achieve 35% recycling and composting standards by 2010, 45% by 2015, and 50% by 2020 in line with the Government's Waste Strategy for England 2007.



Garden waste is made into compost.

Table 9: Total amounts of household waste (tonnes) collected for recycling, reuse and composting by all methods.

	2006/07 (Baseline)	2007/08	2008/09	2009/10
Barnet	42,022	44,527	45,488	47,557
Camden	21,097	19,583	20,391	20,875
Enfield	32,014	32,937	31,418	33,932
Hackney	17,580	17,980	17,370	17,997
Haringey	15,754	18,172	19,478	20,506
Islington	18,113	19,689	19,497	18,900
Waltham Forest	25,917	29,511	28,467	27,195
North London area	172,498	182,399	182,109	189,535



Dry mixed recyclable waste is sorted at a materials recycling facility (MRF).

Table 10: Total amounts of household waste (kilograms) collected for recycling, reuse and composting per household

	2006/07 (Baseline)	2007/08	2008/09	2009/10
Barnet	312	328	335	347
Camden	215	198	206	209
Enfield	270	276	263	283
Hackney	184	186	180	185
Haringey	159	181	194	224
Islington	199	211	209	200
Waltham Forest	271	306	295	286
North London area	238	250	246	254

The recycling and composting rate across the area is measured by National Indicator 192 and includes household waste collected for reuse, recycling and composting.

Table 11: Recycling rates in the North London area

	2006/07 (Baseline)	2007/08	2008/09	2009/10
Barnet	30 %	31 %	31 %	33 %
Camden	28 %	27 %	28 %	29 %
Enfield	24 %	27 %	27 %	31 %
Hackney	23 %	23 %	23 %	23 %
Haringey	21 %	22 %	22 %	25 %
Islington	23 %	26 %	28 %	29 %
Waltham Forest	25 %	29 %	28 %	26 %
North London area	23 %	24 %	27 %	30%

Whilst all Partners are showing an increase in the amount of recycling, composting and reuse, and record levels of such activity are occurring locally, we continue to face a significant challenge to achieve the NLJWS targets of 45% recycling by 2015 and 50% recycling by 2020. At current levels of waste arisings the amount required to be recycled by each household in North London to achieve these targets would be 439 kilograms by 2015 and 488 kilograms by 2020.

Disposal to landfill

4.N The Partner Authorities will seek to minimise disposal to landfill throughout the period of this Strategy and undertake to seek the recovery of energy from landfill gas wherever practicable.

Table 12: Municipal waste sent to landfill

	2006/07 (Baseline)	2007/08	2008/09	2009/10
Tonnes of municipal waste sent to landfill	346,815	292,497	264,253	358,799
% of municipal waste sent to landfill	36%	31%	29%	40%
% of municipal waste sent to landfill with energy recovery	100%	100%	100%	100%

The amounts of municipal waste sent to landfill are measured for National Indicator 193. The amounts sent for disposal to landfill in recent years have declined sharply. This is a reflection of the significant decline in the amounts of waste that are collected for disposal.

All municipal waste that is sent to landfill from the NLWA area is sent to sites that recover energy from the waste in the form of landfill gas which is then converted into electricity.

Abandoned vehicles

5.A1 The Partner Authorities will continue to share information and best practice on abandoned vehicles arising to ensure an integrated approach to provision of inspection, collection and disposal services across North London.

5.A3 The Partner Authorities will encourage the introduction of Authorised Treatment Facilities in appropriate locations in North London, will ensure that the general public are encouraged to use them appropriately, and will seek to secure sufficient facilities within the proposed North London Waste Development Plan Document.

Table 13: Number of abandoned vehicles and authorised treatment facilities in North London

	2006/07 (Baseline)	2007/08	2008/09	2009/10
Number of abandoned vehicles	7,141	5,167	2,733	2,353
Number of Authorised Treatment Facilities	16	13	13	16

The declining number of abandoned vehicles collected in North London is likely to be due to a combination of effective enforcement, the provision of adequate facilities for the disposal of end-of-life vehicles and the price of scrap metal which has been relatively high in the last three years, thus making it more economically advantageous to recover the scrap metal from abandoned vehicles than when the price of metal is relatively low..

Batteries and accumulators

5.C The Partner Authorities will work to increase the level of recycling of household batteries in North London wherever practicable.

The amount of all types of batteries that are collected for recycling has been falling over the past three years. This is likely to be due to the increase in the use of long-life and rechargeable batteries rather than a decrease in participation in recycling schemes.



Batteries are collected for recycling at Reuse and Recycling Centres.

Table 14: Household batteries collected for recycling

	2006/07 (Baseline)	2007/08	2008/09	2009/10
Tonnes of automotive batteries recycled	128	87	72	41
Tonnes of household non-automotive batteries recycled	264	217	105	66

The Batteries Directive, which was implemented into UK Regulations in February 2010. It sets clear targets for battery collection and recycling by obligated companies. There is now a requirement for retailers that supply more than 32 kilograms of portable batteries per annum to operate a free of charge take back scheme. It is expected that these schemes will collect a greater share of the waste stream and so it is possible that the amounts of batteries collected in future will decline even further.

Bulky waste

5.D2 The Partner Authorities undertake to maximise the potential of reusing and recycling materials from the bulky waste stream with the aim of providing a more sustainable service in Partnership with community sector or commercial organisations.

Table 15: Bulky waste recycling

	2006/07 (Baseline)	2007/08	2008/09	2009/10
Tonnes of bulky waste reused or recycled	15,849	10,918	3,906	5,031
Total tonnes of bulky waste collected	28,744	20,145	7,654	18,769
% of bulky waste stream reused or recycled	55 %	54 %	51 %	27 %

This measure includes items of bulky waste that are separated by or on behalf of the Partners from the waste stream for reuse and recycling. Any items that are reused or recycled privately such as through internet recycling schemes and auctions sites may not come to the attention of the Local Authority and so cannot be reported. An increase in material going through these alternative routes could account for some of the dramatic decrease in this measure.

Non-household waste

5.F2 The Partner Authorities will take rigorous enforcement action to minimise the amount of unpaid-for commercial and industrial waste entering the municipal waste stream.

Table 16: Amounts of fly-tipped waste collected

	2006/07 (Baseline)	2007/08	2008/09	2009/10
Tonnes of "fly-tipped" waste collected	28,822	32,704	39,216	43,302
Number of "fly-tip" incidents	111,827	84,967	67,202	58,895

The amount of unpaid for waste entering the municipal waste stream is increasing every year, although the number of recorded incidents is in decline. This may be due to more effective enforcement by local Authorities, or as above through new systems of assessing the different components of the municipal waste stream.

Construction and demolition waste

5.G1 The Partner Authorities will continue to support the provision of sufficient construction and demolition reprocessing facilities in the North London region.

5.G2 The Partner Authorities undertake to separate and reuse or recycle as much municipal construction and demolition waste from the municipal waste stream as is practicable.

Table 17: Construction and demolition waste recycling

	2006/07 (Baseline)	2007/08	2008/09	2009/10
Tonnes of construction and demolition waste recycled	14,763	14,803	17,676	18,166

These figures include construction and demolition waste collected at reuse and recycling centres as well as waste collected from Borough highways maintenance. The increase in the amounts of waste reported here is mostly

due to an increase in the amounts of this waste separated at Reuse and Recycling Centres meaning more of these wastes are recycled and less are sent to landfill .

Liquid wastes

5.H The Partner Authorities will continue to provide statutory collection services for liquid household wastes during the period of this Strategy, and will develop such new facilities as may be required to manage waste in accordance with new legislation.

The services have continued without the need for service expansion.

Hazardous waste

5.J1 The Partner Authorities will continue to provide or procure an effective household hazardous waste service for North London residents throughout the period of this Strategy.

5.J2 The Partner Authorities will support and promote the Corporation of London's current Household Waste Collection and Disposal Service and make appropriate arrangements for the separate collection of fluorescent tubes.

5.J3 The Partner Authorities will continue to collect the maximum range of household hazardous waste and waste electrical and electronic equipment at their Reuse and Recycling Centres.

A wide range of hazardous wastes are routinely collected in the North London area. Fluorescent tubes, batteries, mineral oil, paint, asbestos and refrigeration equipment are collected at Reuse and Recycling Centres and in some areas batteries are collected at the kerbside.

All residents in North London are able to arrange for the collection of household hazardous waste including asbestos and chemicals by the City of London Household Hazardous Waste Collection and Disposal Service a pan-London service for which individual boroughs pay to be a part of. In most cases this service is provided free of charge to residents.

Table 18: Hazardous waste arising

	2006/07 (Baseline)	2007/08	2008/09	2009/10
Tonnes of hazardous waste collected directly	2,220	2,470	1,589	990
Tonnes of fluorescent tubes (included in above)	1	3	5	6
Tonnes of waste electrical and electronic equipment (WEEE) collected at reuse and recycling centres/ designated collection facilities	1,460	2,472	2,775	2,676



Hazardous wastes including paint are collected separately at Reuse and Recycling Centres.

The reported amount of hazardous waste collected directly from residents in the area continues to fall annually but this is likely to be due to the waste produced not being collected by local Authorities rather than a significant decline in the actual amount of waste. In particular Waste Electrical and Electronic Equipment (WEEE), particularly cathode ray tube (CRT) equipment (televisions and computer monitors) and fridges and freezers are now reported as categories of 'WEEE' within WasteDataFlow rather than as 'hazardous waste' although for permitting purposes they remain classified as hazardous waste. Significant amounts of these wastes are also now subject to "take back" schemes operated by retailers meaning that less of these wastes are also now being collected by local Authorities.

The amounts of WEEE and fluorescent tubes have increased every year since the introduction of separate collection arrangements for these waste streams at Reuse and Recycling Centres and other non-publicly accessible designated collection facilities.

Ozone-depleting substances

5.K The Partner Authorities undertake to support appropriate projects promoting the reuse of fridges, and will ensure that the remaining fridges are reprocessed and ozone-depleting substances and metals recovered throughout the period of this Strategy.

Table 19: Refrigeration equipment collected for reuse and recycling

	2006/07 (Baseline)	2007/08	2008/09	2009/10
Tonnes of refrigeration equipment reused and recycled	1,687	2,269	1,467	907

Like many other waste streams the amounts of waste refrigeration equipment collected in North London have fallen in the last three years. This is likely to be partly due to the recession meaning that fewer working units are replaced and partly due to an increase in take back schemes by suppliers of new equipment since the introduction of the WEEE Regulations in July 2007.

Polychlorinated biphenyls

5.M The Partner Authorities confirm that equipment containing Polychlorinated Biphenyls will be registered with the Environment Agency where required under the Environmental Protection (Disposal of Polychlorinated Biphenyls and Other Dangerous Substances) Regulations 2000.

Table 20: Equipment containing Polychlorinated Biphenyls (PCBs)

	2006/07 (Baseline)	2007/08	2008/09	2009/10
Number of registrations of equipment containing PCBs	0	0	0	0

Since 2000 equipment containing PCBs must be registered with the Environment Agency but since the commencement of the Strategy no equipment has been registered by the Partners.

Waste disposal service implications

7.B1 The Partner Authorities undertake to develop sufficient Materials Recycling Facilities and In-Vessel Composting facility capacity to enable North London to meet the collective recycling and composting targets within this Strategy.

7.B2 The Partner Authorities undertake to develop sufficient residual waste treatment facilities as are necessary to ensure that the purchase of additional Landfill Allowances is avoided wherever possible, having regard to the proposed North London Joint Development Plan Document and the best option identified within this Strategy.

Table 21: Recycling and composting capacity required.

	2006/07 (Baseline)	2007/08	2008/09	2009/10
Tonnes MRF capacity required	47,000	52,000	57,000	64,000
Tonnes In-Vessel Composting capacity required	38,000	43,000	47,000	49,000
Tonnes open windrow composting capacity required	17,000	16,000	14,000	14,000
Tonnes of energy-from-waste (EfW) capacity used	260,000	355,000	454,000	328,000
Number of Landfill Allowance Trading Permits purchased	Nil	Nil	Nil	Nil

The capacity required is a reflection of the increasing amounts of material collected for recycling and composting. Sufficient capacity to treat all of the wastes collected has been sourced by Partners, (of which 30,000 tonnes of In-Vessel Composting capacity was inside the Partner Authorities' area).

Sufficient residual waste treatment capacity was maintained to ensure that it was not necessary to purchase Landfill Allowance Trading Scheme (LATS) allowances during the reporting period. The North London Waste Authority continues to make use of the Edmonton waste-to-energy facility to generate electricity from waste that cannot be recycled or composted. The facility generates enough electricity to power 60,000 homes.

The Partners continuously monitor the growth in the waste stream to ensure that all separately collected wastes are suitably treated and this monitoring will continue as part of the long-term procurement exercise currently being undertaken.

Transport implications

7.C1 The Partner Authorities will support transfer of waste by rail wherever this can be shown to offer Best Value and is in accordance with this Strategy.

7.C2 The Partner Authorities will support transfer of waste by water wherever this can be shown to offer Best Value and is in accordance with this Strategy.

A significant amount of waste is transported to landfill by rail from the Hendon Rail Transfer Station. The declining amount of waste transported by this method is proportional to the fall in the amounts of residual waste collected.



Residual waste is loaded into containers at the Hendon Rail Transfer Station for transfer to landfill.

Table 22: Transportation of waste

	2006/07 (Baseline)	2007/08	2008/09	2009/10
Tonnes of waste transferred by road	779,896 (81%)	778,352 (82%)	737,332 (81%)	719,474 (81%)
Tonnes of waste transferred by rail	178,704 (19%)	169,441 (18%)	168,446 (19%)	164,457 (19%)
Tonnes of waste transferred by water	0	0	0	0
Total tonnes transferred	958,600	947,793	905,778	883,931



Residual waste is transported to landfill by rail.

There are ongoing trials to demonstrate the feasibility of transporting waste by water in the North London area and this continues to be an area of interest to the Partners. It is possible that the use of riparian transportation will increase in the future.

A key role for the community sector

- 8.B1 The Partner Authorities welcome the support of community sector organisations in implementing this Strategy and will actively encourage community sector involvement in delivery of waste services wherever this can be demonstrated to offer Best Value.
- 8.B2 The Partner Authorities will consider developing a Waste Community Compact in Partnership with the Community Sector to build trust and encourage further involvement of this sector in implementing this Strategy.

In the North London area the community and voluntary sector continue to provide services to the Partner Authorities. The amount of waste collected by this sector for reuse and recycling is shown in the table 23 below. The services described here are in addition to the support described in objective 4.C2 above.

This sector collects waste materials that are not normally collected by local Authority kerbside recycling schemes or street banks including furniture and textiles. These materials are subsequently reused or recycled.

Table 23: Tonnes of waste collected by the Community and Voluntary Sectors

	2006/07 (Baseline)	2007/08	2008/09	2009/10
Tonnes of waste collected by the Community and Voluntary Sectors	1,200	3,639	4,023	5,357

During 2009/10 the Partners provided support for a number of projects including community and school composting schemes, an education programme to reduce food waste and promoting the use of reusable nappies.

Table 24: Financial support for the Community and Voluntary Sector

	2006/07 (Baseline)	2007/08	2008/09	2009/10
Total £ of support (including £ contracts awarded to the Community and Voluntary Sector)	£97,016	£62,960	£55,133	£18,972

The value of the support for the community and voluntary sector has declined from 2006/07 to 2009/10. This is mainly due to the fact that in 2006/07 the NLWA was in receipt of additional funding from the Waste and Resources Action Programme (WRAP) for a recycling communication campaign which was not in place in the later years. During 2006/07 three of the four work packages contracted to consultancies to deliver the WRAP funded communication campaign were being delivered by non-profit organisations. Accordingly this increased the expenditure of the Authority with the community sector in that year.

Commercial and industrial Partners

- 8.C1 The Partner Authorities will provide commercial waste services in accordance with statutory requirements or beyond and will seek external support to establish sustainable commercial recycling and composting services where this offers improved value for money to council tax payers to work towards London Plan objectives.
- 8.C2 The Partner Authorities will seek to ensure that sufficient household, commercial and industrial waste management sites are provided in North London through development of the North London Joint Waste Development Plan Document.

The amount of commercial waste collected is calculated on the basis of a bi-annual survey of 'trade', i.e. non-household customers in each of the seven north London boroughs. An average density for trade waste is calculated as a result of the survey and then this figure is used in conjunction with the total amount of collections of particular container sizes from trade waste customers to calculate a total tonnage figure collected. The amount of commercial waste collected has increased substantially over the last three years with increasing amounts being recycled.

Table 25: Commercial waste managed by the Partner Authorities

	2006/07 (Baseline)	2007/08	2008/09	2009/10
Total Commercial waste collected	189,830	181,610	236,403	227,039
£ external support for commercial recycling and composting services	£0	£0	£0	£0
Commercial waste recycled and composted	5,781	4,646	6,133	7,660

Working with national agencies

8.D The Partner Authorities will seek to obtain support for North London projects from National funding programmes, including the Waste and Resources Action Programme and the Waste Implementation Programme, as these arise.

Table 26: Support obtained from National funding programmes.

	2006/07 (Baseline)	2007/08	2008/09	2009/10
Amount of support obtained from National funding programmes	£99,895	£190,234	£0	£192,996

The Partners continue to seek support from National funding programmes, when they are available. In 2006/07 and 2007/08 the NLWA was in receipt of funding from WRAP for a recycling communications campaign, delivered in four of the constituent boroughs. The figures reported here represent additional funding that is not reported elsewhere.

In 2009/10 the Partner Authorities received a substantial amount of funding from WRAP to support the “National Love Food Hate Waste” campaign described in section 4B1 above.

Market development and regeneration

8.F1 The Partner Authorities will work closely with London Remade, the private sector and other agencies to encourage the development of new reprocessing infrastructure in North London and will seek to maximise the regeneration potential of these projects.

8.F2 The Partner Authorities are committed to green procurement and will promote sustainable purchasing policies and the “Buy Recycled” campaign throughout the period of this Strategy.

All the Partner Authorities are now signatories to the Mayor of London's Green Procurement Code and Hackney has achieved the prestigious Gold Level and Islington the silver level and Barnet the Bronze level.

Strategic Environmental Assessment (SEA) monitoring

The Strategic Environmental Assessment (SEA) of the North London Joint Waste Strategy includes some additional targets that the Partners have agreed to aim for.

In order to measure progress towards these targets the parameters described beneath each objective have been approved as indicators to be included in future NLJWS progress reports.

Some objectives will not be measured until the sites of new facilities are planned so that a baseline can be established and data compared against this when these facilities are constructed.

Some objectives cannot be measured as they require data to be submitted by contractors that is not required under current contracts. This will be addressed in future contracts so that over time the collection of data becomes more complete. Some objectives are already measured and where possible this data is included in this report.

Nineteen objectives have been drafted and are listed in the 2008/09 Annual Report for the North London Joint Waste Strategy.

Objective 1 *To conserve and enhance natural habitats and wildlife especially priority habitats and species.*

In June 1992 the Convention on Biological Diversity was signed by 159 countries including the United Kingdom. It is a legally binding agreement that requires signatories to conserve, protect and enhance biological diversity. In 1994, the UK Biodiversity Action Plan was published and led to the creation of Local Biodiversity Action Plans. Collectively these action plans identify and seek to protect 391 priority species and 45 priority habitats.

The Biodiversity Action Reporting System is used to report the UK's Biodiversity Strategies and Action Plans. Reports are available through the website at www.ukbap-reporting.org.uk and are regularly updated. The latest report for the North London area shows that several of the North London Boroughs have set objectives and are making progress towards them.

Objective 2 *To maximise the health and well-being of the population*

**Measures: Number of complaints received by contractors operating municipal waste facilities in North London.
Life cycle assessments of human health impacts**

Table 28: Number of complaints received by contractors operating municipal waste facilities in North London

	2006/07 (Baseline)	2007/08	2008/09	2009/10
Edmonton Energy from Waste facility	0	0	0	0
Edmonton In-vessel composting facility	0	0	14	19
Edmonton Bulky Waste Recycling Facility	0	0	0	2
Hornsey Street Waste Transfer Station	0	0	3	0

Contractors operating municipal waste facilities in North London are not currently required to provide data relating to the number of complaints received or the nature of these complaints. However some information about the number of complaints received by LondonWaste Ltd has been obtained and is reproduced here.

Objective 3 *To conserve and enhance soil quality*

Measures: **Percentage of North London’s compost (product made from North London’s waste) used within the NLWA area.**
Percentage of North London’s compost used outside the North London area.

Table 29: Compost product used in the North London area

	2006/07 (Baseline)	2007/08	2008/09	2009/10
Tonnes of compost product made from North London’s waste	8,144	8,943	10,921	8,038
Tonnes of compost product used within the North London area	1,397	4,972	3,918	4,124
% of compost product produced from North London’s waste that is used within the North London area	17 %	56 %	36 %	51 %
% of compost product produced from North London’s waste that is used outside the North London area	83 %	44 %	64 %	49 %

As more waste is collected for composting the amount of compost produced has inevitably increased. The compost recorded as being used in the North London area has been applied to parks, gardens and allotments. The remainder of the compost was applied to agricultural land or was supplied to industry for landscaping or restoration.

Objective 4 *To improve air quality*

Measures: **Lifecycle assessment of air acidification (WRATE output)**
Facility emissions as reported for pollution prevention control permits as appropriate
Air quality in terms of NOx, SOx and particulates

The Environment Agency Waste and Resources Assessment Tool for the Environment (WRATE) compares the environmental impacts of different municipal waste management systems. It is used to model the environmental costs and benefits of different waste management systems.

The Partner Authorities have not modelled the WRATE impact of the current waste management arrangements but it is intended that this will be done in the future. Hence, it is not possible to report the WRATE outputs at this time.

The Environment Agency publishes emissions data for selected facilities on its website www.environment-agency.gov.uk. The numbers reported in this section are taken from the area of the website called “What’s in your back yard?”

The table below shows the emissions from the Edmonton Waste to Energy facility operated by LondonWaste Ltd and where the majority of waste that has not been reused, composted or recycled is sent for energy recovery. These figures are reported to the Environment Agency as a condition of the pollution prevention permit. All figures are reported as tonnes per annum.

Table 30: Emissions from the Edmonton Energy from Waste facility

	2006 (Baseline)	2007	2008	2009
NOx tonnes per annum	512	606	600	-
SOx tonnes per annum	Not published	< 100	< 100	-
Carbon dioxide tonnes per annum	535,062	756,073	659,522	-
Dioxin	0.01	0.02	0.02	-
Number of notifiable incidents	0	0	0	-

NOx and SOx mean the oxides of Nitrogen and Sulphur respectively that contribute to air pollution and can cause acid rain. Carbon dioxide is the main greenhouse gas and is considered to be the leading cause of climate change. Dioxins are complex chemicals that are known to bioaccumulate in animals and humans and are linked to health problems at high levels.

A notifiable incident is when the emissions from an authorised facility breach the terms of the Environmental Permit granted by the Environment Agency to protect public health and the environment. Notifiable incidents must be reported to the regulator.

Data for 2009 has not yet been published by the Environment Agency.

Objective 8 *To adapt to the unavoidable consequences of climate change*

Measures Percentage of developments with substantial urban drainage systems (SUDS)

It is not possible to obtain this data from contractors under the NLWA's existing contracts but this will be incorporated as a contractual requirement into future contracts.

Objective 9 *To minimise the production of waste arising from households and local Authority customers*

**Measures kg of household waste collected per head
kg of residual household waste per household**

Table 31: Household and non-household waste arising in the North London area

	2006/07 (Baseline)	2007/08	2008/09	2009/10
Total municipal waste collected (tonnes)	958,600	944,983	905,778	883,931
Total household waste collected (tonnes)	768,770	762,774	669,375	656,892
Non-household waste collected	189,830	181,610	236,403	227,039
kilograms of household waste collected per head of population	458	452	393	381
National Indicator 191 Kilograms of residual household waste collected per household	843	779	670	622

The amounts of residual household waste per household collected in the North London are recorded for National Indicator 191. The amounts collected are declining. This is likely to be due to the combination of many factors including reductions in the amounts of packaging waste produced and an increase in the amounts of waste that are collected for recycling and composting and the increasing introduction of "take back" schemes for large items by high street retailers.

Objective 10 *To maximise reuse, recycling and recovery rates by viewing waste as a resource.*

- Measures**
- Percentage of household waste sent for reuse, recycling and composting (National Indicator 192)
 - Percentage of municipal waste sent to landfill (National Indicator 193)
 - Life cycle assessment of resource depletion (WRATE output)
 - Number of bring sites per 100,000 people
 - Number of Reuse and Recycling facilities per 100,000 people
 - Percentage of households served by recycling and composting collections
 - Percentage of trade waste customers offered a recycling and/or composting collection service

It is important to note that the National Indicators reported in this section (NI 192 and 193) show different denominators. National Indicator 192 only shows the amounts of household waste that were sent for reuse, recycling and composting but National Indicator 193 shows the amount of municipal waste that was sent to landfill. The measure of municipal waste includes household waste but also includes non-household waste from shops and other businesses that are collected by local Authorities. Hence the two National Indicators do not relate to the same waste stream.



Table 32: Waste management in North London

	2006/07 (Baseline)	2007/08	2008/09	2009/10
% of household waste sent for reuse, recycling and composting (NI 192)	23 %	24%	27 %	29 %
Tonnes of household waste sent for reuse, recycling and composting	174,687	185,291	182,109	189,535
% of municipal waste sent to landfill (NI 193)	36 %	31%	29 %	41 %
Total number of bring sites	745	760	773	631
Number of bring sites per 100,000 people	44	45	45	33
Total number of Reuse and Recycling Facilities	9	9	9	9
Number of Reuse and Recycling Facilities per 100,000 people	1	1	1	1
% of households served by recycling collections	97%	100%	100%	100%
% of households served by composting collections	64%	89%	93%	95%

The percentage of waste that is separately collected for recycling and composting continues to rise as more residents have access to the services. The decrease in waste to landfill is a consequence of increased recycling activity and a fall in the total amount of household waste generated.

The number of bring sites per 100,000 population has fallen since the commencement of the strategy period. This is partly due to a fall in the provision of sites and partly due to an increase in the population served.

The number of residents receiving a collection service for recyclable and/or compostable materials has increased annually. Nearly all residents have a kerbside or near entrance collection point for these materials.

The percentage of trade waste customers offered a recycling and/or composting collection service has not yet been calculated due to inadequate data being available. It is hoped that this data will be published in the future.

Objective 11 *To minimise the global social and environmental impact of consumption of resources*

Measures Life cycle assessment of resource depletion
(WRATE output)

It is not possible to determine this until sites have been identified and technologies selected. It is intended that this indicator will be reported in future when appropriate.

Objective 12 *To enable waste to be disposed in one of the nearest appropriate facilities*

No measures proposed at this time.

It is envisaged that an indicator will be developed and reported in the future.

Objective 13 *To enhance and protect the existing built environment including heritage assets and the wider historic environment*

Measures Number of waste management facilities that are intrusively visible from historic buildings
Number of new waste management facilities that have an unreasonably negative impact on heritage assets and the wider historic environment

The Authority is not aware that any of the waste management facilities that are used are intrusively visible from historic buildings nor that any have an unreasonably negative impact on heritage assets or the wider historic environment. This will be assessed during the planning stage of new waste management facilities.

Objective 14 *To ensure new buildings and associated infrastructure are designed and constructed in a sustainable way*

Measures: Number of new waste management facilities designed and built to meet minimum BREEAM standards
 Percentage of recycled content material used in any new waste facilities that are built
 Percentage of new waste infrastructure that is built on previously developed or industrially used land
 Tonnage of waste processed per hectare

It is not possible to report against these indicators until sites have been identified and waste facilities specified. It is intended that these indicators will be reported in future when appropriate.

Objective 16 *To stimulate redevelopment and urban renaissance that benefits the most deprived areas and communities*

Measures: Percentage of jobs created in areas of above average deprivation or unemployment

It is not possible to determine this figure at this time. It is intended that this will be reported in future as new facilities and services are commissioned.

Objective 17 *To encourage a strong, diverse and stable economy*

Measures: Number of direct jobs in waste services

It is not possible to determine this figure at this time. It is intended that this will be reported in future as new facilities and services are commissioned.

Objective 18 *To improve the resilience of businesses and their environmental, social and economic performance*

Measure: Percentage of organisations delivering waste services with a recognised environmental and quality standard accreditation

It is not possible to determine this figure at this time. It is intended that this will be reported in future.

Objective 19 *To maximise the accessibility and equality of services*

Measure: **Number of bring sites per 100,000 people**
 Number of Reuse and Recycling centres per 100,000 people
 Percentage of households served by recycling and composting collections
 Percentage of trade waste customers offered a recycling and/or composting collection service
 Percentage of residents using waste services
 Percentage of residents satisfied with waste services

Some of these parameters are also reported in Objective 10 above and are duplicated here for ease of reference

Table 33: Access to services in the North London area.

	2006/07	2007/08	2008/09	2009/10
Total number of bring sites	745	760	773	631
Number of bring sites per 100,000 people	44	45	45	33
Total number of Reuse and Recycling Centres	9	9	9	9
Number of Reuse and Recycling Centres per 100,000 people	1	1	1	1
Percentage of residents using waste services	100%	100%	100 %	100 %
Percentage of residents satisfied with the keeping of public land clear of refuse and litter*	-	-	55.9 %	-
Percentage of residents satisfied with refuse collection services*	-	-	76.4 %	-
Percentage of residents satisfied with doorstep recycling collection services*	-	-	67.4 %	-
Percentage of residents satisfied with household waste recycling centres*	-	-	59.5 %	-

The number of bring sites increased from 2006/07 to 2007/08 but as the population has increased the provision per head has fallen slightly.

The number of reuse and recycling centres is reported under “Reuse and Recycling Centres and in Table 6 above and the percentage of trade waste customers offered a recycling and/or composting collection service is reported under Objective 10.

*This information is taken from the Place Survey 2008 conducted by the Audit Commission. On 10 August 2010 the Minister for Housing and Local Government wrote to all local Authorities Chief Executives advising them of the cancellation of the Place Survey with effect from August 2010. Local Authorities will no longer be expected to report against the National Indicators measured by this survey. No further data is currently available in respect of this objective but will be reported in future if possible.

Further information

If you would like any further information about the North London Joint Waste Strategy please contact the North London Waste Authority:

Tel 020 8489 5730

Website: <http://www.nlwa.gov.uk>

e-mail: post@nlwa.gov.uk

North London Waste Authority
Unit 169 Lee Valley Technopark
Ashley Road
Tottenham
London
N17 9LN