

NORTH LONDON WASTE AUTHORITY

REPORT TITLE: NORTH LONDON HEAT AND POWER PROJECT UPDATE AND REPORTS

REPORT OF: MANAGING DIRECTOR

FOR SUBMISSION TO: AUTHORITY MEETING

DATE: 5 OCTOBER 2023

SUMMARY OF REPORT:

This report provides the Authority with an update on progress of the North London Heat and Power Project (NLHPP), including the Energy Recovery Facility (ERF).

RECOMMENDATIONS:

The Authority is recommended to comment on and note the contents of the report.

SIGNED:  Managing Director

DATE: 25 September 2023

1. INTRODUCTION AND PURPOSE

- 1.1. The North London Heat and Power Project (NLHPP) is a programme of works authorised by a development consent order granted in February 2017 through which the existing Energy from Waste (EfW) plant at the Edmonton EcoPark will be replaced with a new Energy Recovery Facility (ERF). The programme of works includes provision of a Resource Recovery Facility (RRF) for reception and transfer of waste, incorporating a public Reuse and Recycling Centre and EcoPark House, a visitor centre which will be used to provide community and education space and backup office space. In preparing for and carrying out the works on the NLHPP programme, the management team is working closely with LondonEnergy Ltd (LEL) the operators of the EcoPark and the current EfW plant.
- 1.2. This status report provides Members with an update on progress of the NLHPP in August and September 2023, building on the report provided to the Programme Committee for its meeting on 7 September. The report structure provides a summary narrative in section 2 with further details of progress in health and safety, social value, stakeholder engagement and environmental management across the NLHPP in sections 3 to 6.
- 1.3. Section 7 reports on commercial matters with confidential information provided in an appendix in Part II of this agenda.
- 1.4. Sections 8 to 12 provide details of progress in the delivery of the ERF, RRF, EcoPark House, various site-wide enabling works and preparations for the decommissioning and demolition of the existing EfW plant.

2. OVERALL SUMMARY

- 2.1. The NLHPP remains on track to deliver its overall objectives, on time and within budget.
- 2.2. There has been a focus on site on the safety risks that can arise between people working and moving construction plant. This has involved reinforcement by our principal contractors of safe methods of working using exclusion zones and site-wide briefings.
- 2.3. In recognition of the challenges that exist in the construction industry around mental health, the NLHPP hosted a talk by an external speaker, Rob Muldoon. Rob has been in the construction industry for 20 years as a bricklayer. He began podcasting to provide a platform for others in the construction industry to learn about mental health and hear about real life events from people within the industry. In these talks Rob discussed his own mental health and wellbeing journey.
- 2.4. The NLHPP schools program begins a new academic year in September 2023. In the past year, the program has engaged 2,315 students from 52 North London schools

involving 140 staff members and technical experts. The Social Value team have adapted the programme for primary schools and those outside mainstream education, fostering sustainability discussions and career opportunities. The Social Value Governance Board met in September 2023 where they discussed progress, including the delivery of 35 apprenticeships on the NLHPP with more on the horizon. Plans for the next period includes future network and training initiatives in collaboration with Acciona and developing an Equality, Diversity and Inclusion (EDI) training plan.

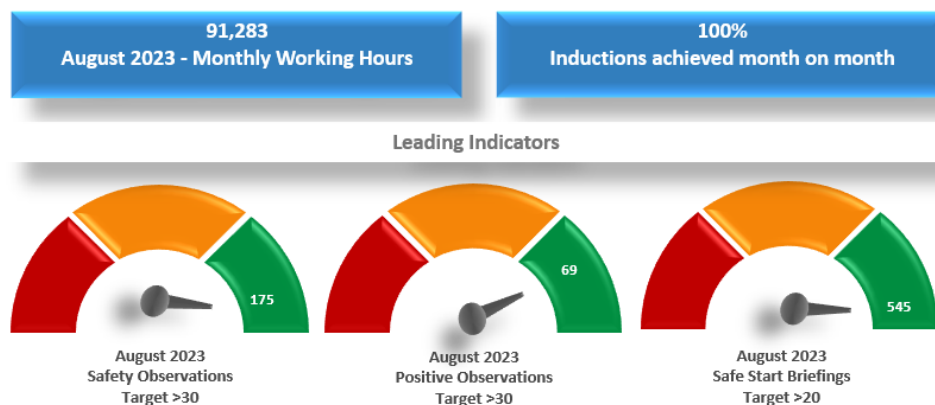
- 2.5. Stakeholder interest remains positive, and we continue to host a variety of local, national and international groups. Since April 2023, 102 visitors have been to site. A small number of enquiries on the Edmonton EcoPark and letters to local newspapers were published following the Joint Waste Strategy survey. These are being considered as part of the formal process for the new strategy and the communications team are continuing to respond to enquiries as appropriate.
- 2.6. We held an Environment Week in August 2023 to promote environmental sustainability throughout the NLHPP using a series of videos covering the work being done on carbon reduction, circular economy and air quality.
- 2.7. The construction of the ERF by Acciona continues to make very good progress on site, with the start of the second phase of piling activity.
- 2.8. Acciona have continued to make good progress with the engineering and construction of the ERF towards the planned take-over into service in 2026. The structural steelwork that will support major items of process equipment is being manufactured, and procurement of the installation work is in progress.
- 2.9. The RRF has made progress with testing and commissioning building systems and is expecting to start receiving some waste as part of user acceptance testing in early December. However, the plan for summer opening has been delayed principally by the need to re-treat steel beams with fire retardant paint, and the impact that this has on commissioning activities. The retreatment of the paint arose because of an error within Taylor Woodrow and their supply chain. The Authority is not liable for the cost of re-treating the beams, which was a failure to comply with the requirements of the contract. However, as the contract involves a target price and a pain/gain mechanism between the Authority and Taylor Woodrow, the delay does give rise to an increase in Authority costs.
- 2.10. The EcoPark House building envelope has been substantially completed and is nearing weathertightness. Good progress has been made with the mechanical and electrical fitout.
- 2.11. The Temporary Ash Bay works continue to be successfully managed to enable LEL take over.

- 2.12. To minimise disruption to other preceding works, the Cadent gas main installation targeted start date has been revised to early 2024.
- 2.13. 21 companies have expressed interest in attending the Early Market Engagement events being held in October 2023 with the decommissioning and demolition industry. These engagements will help inform the procurement and risk strategy, and what further investigation work should be carried out over the next few years.

3. HEALTH, SAFETY AND WELLBEING (HSW)

- 3.1. The programme continues to demonstrate the strongest of health and safety cultures, positively comparable with other major construction programmes in the UK. The unwavering commitment to consistent and continued health, safety and wellbeing improvement contributes hugely to the programme delivering successes such as, industry low Accident Frequency Rates (AFR), a superb and cultivating wellbeing standard developing, improvements in high-risk people and plant interfaces. The programme is focussing on behavioural safety and our ‘Take 5’ model has been piloted. It will be shared across the programme and will support the collaborative environment that this project tries to foster.
- 3.2. The AFR for reportable injuries in accordance with Reporting of Injuries, Diseases and Dangerous Occurrences Regulations (RIDDOR) 2013 is at 0.101 for the programme. This reflects a very good performance against construction industry average AFR at approximately 0.38 based on 2022 Health and Safety Executive data.

3.3. Key Performance Indicators:



- 3.4. **HSW Audits:** Monthly site inspections continue to be carried out by the Principal Contractors and are reviewed by the client health and safety team. These are supplemented by regular site walk rounds carried out by the HSW, Technical Assurance and Construction teams. In addition, a monthly deep dive audit is conducted focussing on high-risk activities using current legislation, the HSW Manual and best practice. Results are shared with the contractor, actions raised

and monitored. During the period, a deep-dive audit was carried out on working at height on the EcoPark South project.

- 3.5. **Safety Observations:** The total number of observations remain high with 175 recorded for August 2023. Within these figures, 69 positive behaviours and interventions were recorded which is reflective of the proactive initiatives (safe start briefings, stand downs, training, audits, etc.) that are in place across the programme.
- 3.6. **Safe Start Briefings:** The number of prestart briefings delivered daily to the workforce remain consistently high and are primarily aimed at awareness of work hazards and ongoing daily site activities. These briefings are also utilised to undertake toolbox talks specific to the type of work being undertaken on the project and cover any incidents or near-misses that have occurred to prevent recurrence.
- 3.7. **HSW Working Group Forum:** The HSW Forum met and discussed the topic of site access, egress and working at height. Sharing lessons learned and best practice remains with plans put in place to further improve communication throughout the project.
- 3.8. The 'Mind your Head' mental health talk, led by mental health advocate and construction worker Rob Muldoon, took place on 29 August 2023, and was attended by approximately 85 people. This event aligned with the World Suicide Prevention Day in September 2023.

4. SOCIAL VALUE

- 4.1. September 2023 marks the start of the new academic year and with it a new year of the NLHPP schools programme commences across the NLWA area. This section of the report provides a summary of the work undertaken to date, reflecting on the successes of the school engagement programme over the past academic year, which has now been rolled out to all seven north London boroughs. To date, a total of 2,315 students have participated in the programme across 52 North London schools. Since its launch in March 2021, 140 staff members on the NLHPP have been involved in its delivery, dedicating 323 hours of their time to its successful roll out. This has involved input from a wide range of technical experts across multiple organisations and career stages.
- 4.2. The aim of the NLHPP schools programme is 'to stimulate interest in Science, Technology, Engineering and Maths (STEM) subjects, as well as construction, engineering and waste infrastructure related careers'. The programme is structured around four key topics: Recycling and Waste; EfW; Delivering a Large-Scale Construction Project and Careers Insights. These sessions can be adapted to meet the individual needs of the schools and their students, for primary and secondary

schools as well as those outside of mainstream education. Feedback from students who have participated in the programme over the past year has been positive.

- 4.3. Overall, over half of students who participated in a session said that they had gained a greater understanding of the variety of job roles in a large construction project and had got more of an understanding of the NLHPP. As a direct result of our session, more students said they would now consider a career in construction, engineering, or the built environment. After the sessions, the number of students who said they would now consider pursuing the apprenticeship route to employment increased by a third.
- 4.4. Over the course of the last academic year, the Social Value team successfully rolled out an adapted version of the programme to primary school students. The first of these was at Christchurch Primary School in Camden, where the team spoke to students about 'a day in their life at the NLHPP'. A particular highlight this year also included a session in July 2023 at Galliard Primary School in Enfield, where the team delivered a session to the student eco-council. They discussed the concept of sustainability, both in the context of this at home and at school and how this relates to the NLHPP.
- 4.5. We have also adapted the programme for those outside of mainstream education. In March 2023, the team attended a careers fair at Whitefield SEN school in Waltham Forest to engage with students and their parents about the range of employment opportunities available on the NLHPP. Over the course of the summer, Acciona have also hosted work experience students from various schools, including New River College, a Pupil Referral Unit in Islington, where the team delivered a session on 'Delivering a Large-Scale Construction Project' earlier in the year. Students in Years 5 and 6 from Brook on Broadwaters SEN Primary School (Haringey) visited site in October 2022, organised in partnership with community organisation MyAfK.
- 4.6. The Social Value Governance Board met on 7 September 2023. Acciona gave an update on their progress against their Social Value targets and representatives from Women into Construction attended to update on the success of Round 1 and ways in which a second cohort could be progressed, including aligning with the future skills needs of the operating company of the facility, London Energy Limited (LEL). The Board also discussed the progress of Round 1 of RE-Power Communities and the selection process for the second round, applications for which closed on the 29 September 2023.
- 4.7. The total number of apprenticeships delivered on the NLHPP to date is 35. A number of new apprentices will shortly enrol on their courses, and this will be reflected in next month's monitoring. Byrne Brothers have also successfully recruited apprentices, three of whom started their courses in September 2023, and a number of other candidates are currently going through the skills scan process, to

start later in the year. Future apprenticeship opportunities in the pipeline include roles within catering and payroll.

Look Ahead

- 4.8. The team are currently working with Acciona to adapt the existing format of the Apprentice Network, a forum at which apprentices across the NLHPP from multiple organisations come together to meet, network and share experiences. After a survey was undertaken with the current participants, it is proposed to alter the current forum to consist of sessions to network with their primary employers, lunch and learn sessions from across the programme and volunteering opportunities (in particular, the RE-Power community projects or the school engagement programme).
- 4.9. The team are working with Acciona in their development of an EDI training plan, which will set out the focus for training initiatives over the course of the next year, in alignment with the collaboration team.
- 4.10. A summary of the social value data up to the end of August 2023 is provided in the social value dashboard overleaf.

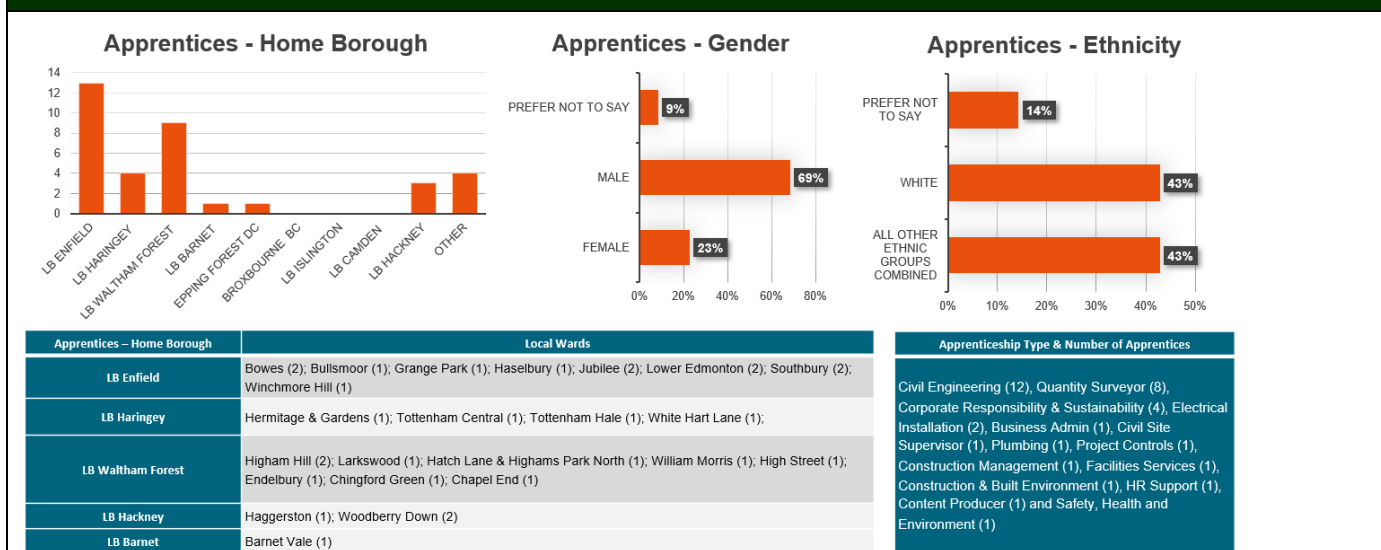
Social Value Dashboard

Social Value Theme	Target	Progress
Development Consent Order (DCO) Obligations:		
Apprenticeships	100	91 years of apprentices' employment 35 individuals
On-site Skills Training Placements	225	159
LB Enfield targets, adopted as measure by NLHPP:		
Local Labour	25%	26%
Local Businesses	10%	10% £27.9m (local spend by contractors to date)
	-	£37.4m (local spend by NLWA & contractors to date)

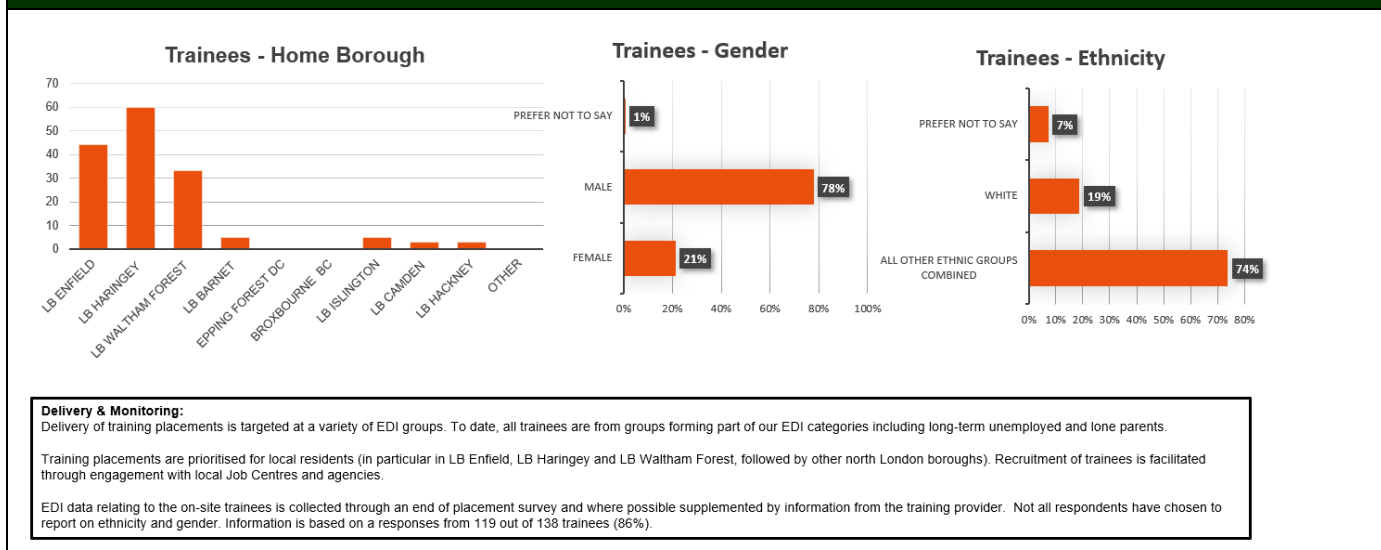
Delivery against Industry Benchmarks:		
Equality, Diversity & Inclusion (EDI)	The project aims to promote women in on-site construction workforce	3%*
	The project aims to promote Black, Asian and Minority Ethnic (BAME) Groups in on-site construction workforce.	14%*

*Not all employees have chosen to report on ethnicity and gender, and the statistics are likely an underestimate. NLHPP is working with contractors to improve data collection.

Apprenticeships

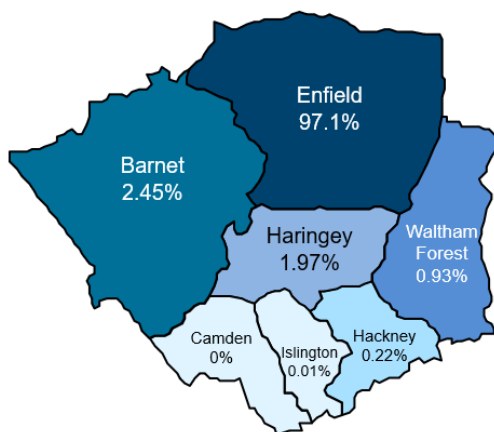


Training Placements

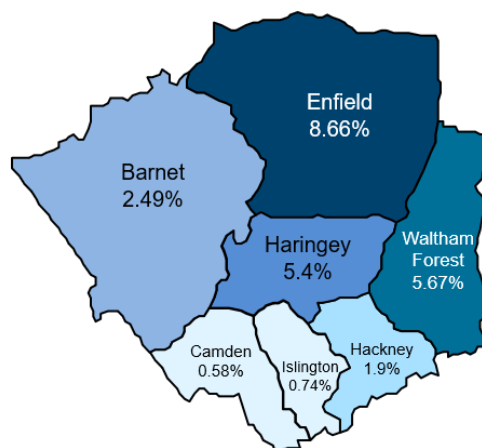


Local Business Spend and Local Employment

Local Business Spend by Borough



Local Labour (all jobs) by Borough



The maps above display the distribution of local business spend and borough of local residents across the NLWA area, with the darker colours representing a higher percentage share. It is recognised that there is a disparity in terms of the distribution of local spend and local employment. The team will continue to signpost employment opportunities available on the Project through the Social Value Governance Board as well as via local job brokerages. As development of the ERF continues, more procurement opportunities for local businesses will arise through the supply chain. A number of 'meet the buyer' events will be held with local SMEs throughout the year, open for all businesses across the NLWA area. These opportunities will be promoted through the Social Value Governance Board and via the NLHPP digital channels.

Schools Programme and Community Projects

Schools Programme

	Secondary	Primary
Total Number of schools engaged	48	3
LB Enfield	12	1
LB Haringey	8	1
LB Waltham Forest	14	-
LB Barnet	4	-
LB Islington	5	-
LB Camden	1	1
LB Hackney	4	-
Other	-	-
Number of SEN Schools Engaged	4	
Number of PRUs Engaged	1	
Number of sessions held	72	
Sessions on careers topics	61	
Sessions on STEM topics	9	
Number of students engaged	2315	
Number of staff involved	140	
Number of staff hours	323.5	
Number of site visits	12	

Community Projects

Number of organisations supported	20	
LB Enfield	7	
LB Haringey	6	
LB Waltham Forest	6	
LB Barnet	1	
LB Islington	-	
LB Camden	-	
LB Hackney	-	
Other	-	
	Delivered	Target
Number of volunteer hours	487	9,775
Donation total	£107,212.22	£187,500.00

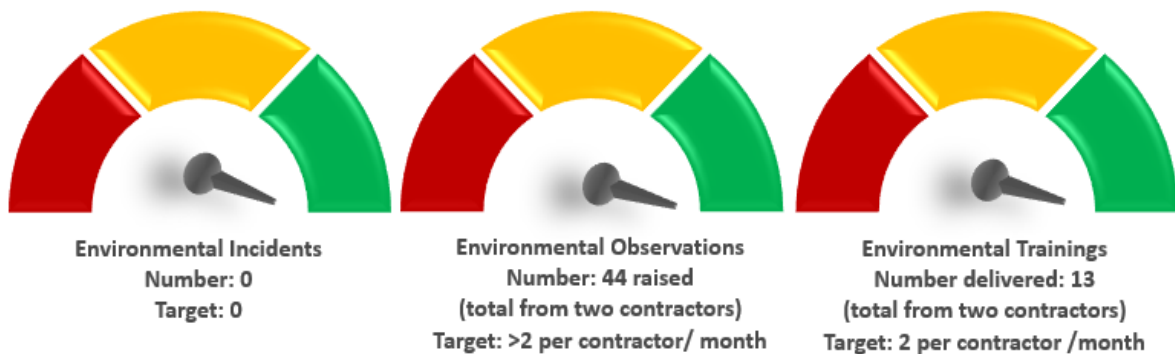
5. COMMUNICATIONS AND STAKEHOLDER ENGAGEMENT

- 5.1. EcoPark Tours continue to be offered to stakeholders to visit the progress on-site. Since April 2023, 102 visitors have been to site. These include Borough Climate Leads, University students and international groups from Germany, Nigeria and a global Conference run by the Department for Business and Trade.
- 5.2. At the end of September 2023, Community Liaison Group members visited the Edmonton EcoPark and had the opportunity to walk through the new recycling facilities at the south of the site.

- 5.3. A small number of enquiries on the Edmonton EcoPark and letters to local newspapers were published following the Joint Waste Strategy survey. These are being considered as part of the formal process for the new strategy and the communications team are continuing to respond to enquiries as appropriate.
- 5.4. Arup have been shortlisted in the Chartered Institute of Procurement and Supply Awards for 'Consultancy Project of the Year' for the ERF Procurement on the NLHPP.

6. ENVIRONMENT AND SUSTAINABILITY

- 6.1. The project continues to focus on environmental and sustainability considerations, working collaboratively with the construction contractors to manage environmental risks and identify opportunities for enhancing sustainability performance. Focus on continual improvement is maintained through environmental monitoring, site inspections, environmental observations and training, pursuit of innovation and best practice.
- 6.2. In general, there has been good performance against Environment and Sustainability (E&S) Key Performance Indicators (KPIs) with minimum targets either met or exceeded for EcoPark South Project and ERF, as shown below.



- 6.3. **Environmental Innovation and Best Practice:** The programme seeks to promote environmental innovation and best practice, with a contractual requirement for Acciona and Taylor Woodrow to identify two innovative or best practice initiatives per quarter. Since the previous report, two best practice opportunities have been implemented on site by Taylor Woodrow, supporting the project’s carbon reduction and circular economy aims. The opportunities relate to use of non-diesel fuel within equipment which reduces carbon and recycling of damaged personal protective equipment (PPE) which reduced waste and promotes circular economy.
- 6.4. Across NLHPP all construction workers on site are required to wear PPE including hi-visibility clothing, hard hats, gloves, and eye protection to protect operatives from health and safety risks. To promote a circular economy and reduce waste, a PPE recycling bin has been installed outside the Taylor Woodrow changing rooms

where operatives can dispose of all damaged PPE. Used PPE with simple compositions (e.g. 100% cotton or 100% nylon) can be reused for future manufacturing of other garments, other PPE can be recycled into different products such as insulation and geotextiles. Following the success of this initiative, we are looking to roll PPE recycling out across the whole site.



Figure 1: A PPE recycling bin

6.5. **Environmental Site Inspections:** Surveillance visits are used to confirm the management of environmental issues in line with good practice, highlight positive activities and areas for further improvement and confirm that environmental monitoring is ongoing. Specific areas for improvement are followed up with the contractors on an ongoing basis. Observations from inspections undertaken in July and August included:

- 6.5.1. **Positive:** good on-site ecological management in relation to nesting birds and pollution control in relation to protection from spills.
- 6.5.2. **Negative:** ensuring that appropriate washing facilities are implemented to remove mud from vehicles leaving site, management of material stockpiles and tidy storage of materials on site.

7. COMMERCIAL MATTERS

- 7.1. In July 2019, the Programme Committee noted the baseline budget for the NLHPP at £1,220.6m based on March 2019 prices. The use of a consistent price basis (in this case March 2019) is good practice for ensuring that there is a clear and consistent reporting basis against which to monitor and report project delivery.
- 7.2. Every three months the baseline budget is uplifted to an outturn price, including an assessment for inflation to be incurred over the 12-year programme duration.

Based on current inflationary expectations, the March 2019 baseline budget of £1,220.6m is equivalent to £1,506.5m in outturn prices.

- 7.3. The below table shows the status of the cost performance reflective of July 2023 period end. Paragraph 7.4 provides some commentary on the table.

Outturn cost (including inflation)	Actual Cost to Date	Estimate to Complete	Total
Committed Base Cost	£545.1m	£752.4m	£1,297.5m
Uncommitted Base Cost		£125.8m	£125.8m
Contingency		£83.2m	£83.2m
Total	£545.1m	£ 961.4m	£1,506.5m

- 7.4. To date, the NLHPP has committed £1,297.5m of cost. This reflects the value of work agreed in contracts, including construction works, advisors, NLWA direct costs and third-party fees. £545.1m of the committed Base Cost value has been paid to date. £752.4m is committed but not yet spent. £125.8m of Base Cost remains uncommitted – this is intended to fund future works which have not yet been contracted, including the demolition of the existing EFW assets, and associated adviser and other costs.
- 7.5. £83.2m of Contingency remains on the NLHPP. The Contingency is held to fund identified risks, any unforeseen circumstances, or extra costs that arise during the construction process. The Contingency is 6% compared to the total Base Cost value and is 9% when compared to Base Cost not yet spent.
- 7.6. A thorough review of forecast costs for completing the RRF and EcoPark House by Taylor Woodrow has been carried out with them resulting in agreement of contentious matters relating to change and disallowed costs. This exercise has also confirmed their commitment to incentives and penalties for achieving handover of facilities. The review of forecast costs was reported to the Programme Committee in September along with a proposal for an enhanced delegation to complete the EcoPark South project. The Programme Committee meeting was not quorate and in order to maintain the project on track and avoid further costs driven by a delay, the decision to increase the delegation was taken by the Clerk under urgency procedures provided for in Standing Orders. Members of the Programme Committee had been briefed, in addition to the information being included in a Programme Committee paper. Programme Committee members were consulted on the use of the urgency procedures by the Clerk and all responses confirmed that Members supported this. Consideration of the increased delegation includes

commercially confidential information related to the Authority's ongoing contract negotiations with Taylor Woodrow. This material is therefore provided in a paper for Part 2 of the meeting.

- 7.7. The commercial matters pertaining to the contract with Acciona for the engineering and construction of the ERF are discussed in a paper in Part 2 of the meeting.

8. PROJECT DELIVERY SUMMARY

Energy Recover Facility

- 8.1. **Summary of Progress:** Acciona continue to deliver against the approved programme. They remain on plan to achieve take-over into service in late 2026.
- 8.2. Acciona have invested a significant resource to review and reprofile their engineering programme. It is important that the programme is robust and matched by delivery plans to achieve milestones. The performance of this updated engineering programme will be closely monitored through September and October 2023.
- 8.3. Acciona are procuring critical subcontractor packages, namely boiler and mechanical equipment installation and structural steel erection. These are challenged by lack of capacity in the UK supply market and are subject to management under the National Agreement for the Engineering Construction Industry (NAECI).
- 8.4. Acciona completed their major piling works ahead of programme and have taken advantage of the dry summer months to continue pouring of reinforced concrete slabs in readiness for the installation of the boiler and its structural steel supports. Also, the shipment to site of the first batch of boiler and associated structural steel has commenced and Acciona has successfully achieved another major milestone, which is the start of the equipment assembly for bunker wall construction works.



Figure 2: A view of the boiler and bunker areas and preparations for the slipform works



Figure 3: Completion of the second phase of piling and final enabling works (tank removal)

- 8.5. **Look Ahead:** Whilst the project is facing some challenges, the ERF project team will continue to build good relationships and collaborative working with Acciona. This will provide the vital platform necessary for escalating and resolving project issues. An example of this agreement between the project team and Acciona is the joint risk management framework.
- 8.6. The structural steel contract award is targeted for October 2023 and the boiler assembly for early November 2023. In the next month, Acciona aim to complete the commissioning of the onsite concrete production plant and ensure it is operational.

Resource Recovery Facility

- 8.7. **Summary of Progress:** Construction works have continued to be progressed on multiple work fronts with remedial works to intumescent paint and fire compartmentation, with both the Recycling and Fuel Preparation Facility (RFPF) and Reuse and Recycling Centre (RRC) buildings being prioritised.
- 8.8. A key success for the period was the handover of construction work site areas to the north of the eastern ramp to the contractor for the ERF and the laydown area in the main compound.



Figure 4: Aerial view of RRC and EcoPark House

- 8.9. Good progress continues to be made with the electrical and mechanical works to the RRF Control rooms and the Crow's Nest. In the rest of the RFPF and RRC buildings, final fix of the electrical systems is ongoing, which include ceiling mounted devices such as CCTV and speakers as well as access control panels to doors.
- 8.10. The installation of sanitary ware has progressed throughout both RFPF and RRC and furniture, fixtures and equipment are installed in the operations office as the first critical room.



Figure 5: RFPF - ground floor disabled toilets and showers

- 8.11. The external cladding and canopy to the RFPF tipping hall are now completed along with flashings to the roller shutter doors. The traffic management system and illuminated and non-illuminated signage has also been installed with commissioning to follow. Lift installation to both north and south goods lifts is now complete with testing and commissioning due to commence in the next period.
- 8.12. The critical Supervisory Control and Data Acquisition (SCADA) link has been installed and energised to enable the network to go live and subsequently connect critical systems with the SCADA system. Access control, mist-air, Integrated Odour and Ventilation System (IOVS) and trade effluent systems are the first ones to be tested through it.
- 8.13. Commissioning of the key systems is ongoing with the Trade Effluent and Mist-Air system achieving an ATP03 status. The roller shutter doors are also being testing through the SCADA link and ATP3 is to be achieved in the next period.

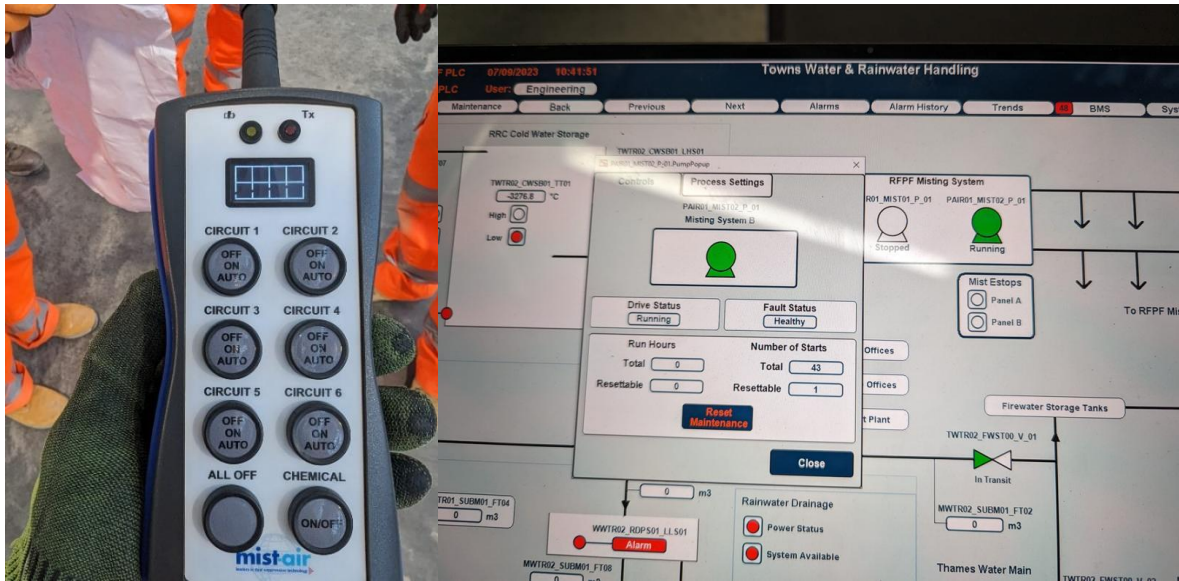


Figure 6: Mist-air system testing and commissioning

- 8.14. A key focus has been to produce Operations and Maintenance (O&M) manuals and handover documentation as well as delivering the training to LEL staff. This is being achieved through developing a timeline for their delivery to align with LEL's readiness programme.
- 8.15. The team have collaborated with the contractor to develop and agree a programme to completion. The exercise has largely been concluded including tracking milestones introduced to drive towards the target completion dates.
- 8.16. Externally good progress continues to be made with civil works largely on programme. The eastern ramp is nearing completion with tarmac laying having commenced and the weighbridge kiosk erected. Similarly, the southern road has been completed and road formation works have commenced on the east road.
- 8.17. The roller shutter door protection kerbs have now been installed and the concreting to most of the adjacent slabs is complete.



Figure 7: Eastern Access ramp

- 8.18. **Look Ahead:** Testing and commissioning of the 43 mechanical and electrical systems will be ramping up as areas become available, equipment and its utility connections will be installed over the next two months. There will be a focus on finishing offices and equipment rooms to enable the facility wide communications equipment to be tested.
- 8.19. The asset information and O&M manuals will be received progressively to enable LEL to incorporate into their operating procedures and receive training on the operation and maintenance of the systems.
- 8.20. Asset labelling has progressed in the period with roller shutter doors being the first system to be fully labelled. Fire detection, IOVS and gas suppression systems are being done in parallel. Labelling is forecasted to ramp up to achieve the planned handover date.
- 8.21. The team has worked closely with the contractor and LEL to commence testing of wet waste on the 1 December 2023. This is a critical part for preparing the site for going into full operation and it complies with the Environmental Agency requirements.
- 8.22. Externally, the works will progress to complete the roads and concrete works allowing LEL's User Acceptance Tests to continue.

EcoPark House

- 8.23. **Summary of Progress:** The building envelope has been substantially completed and is nearing weathertightness.
- 8.24. Action to correct application of fire-retardant paint is underway with the critical comms room works completed.

- 8.25. Good progress has been made with the mechanical and electrical fitout including the comms and fire detection on the ground and first floor. Glazing frame for the lecture and exhibition hall has been installed. The building envelope close out has continued to the west elevation with metal louvres installed to the first-floor plant room.
- 8.26. Internally, works for power, lighting, communication and fire detection made good progress in readiness for testing and commissioning of the systems. The ground source heat pump works are completed.



Figure 8: EcoPark House view from the River Lee Navigation

- 8.27. The external terrace decking has been installed. Internally, the lift installation has been completed and is awaiting testing. EcoPark House has so far attained a BREEAM rating of Very Good as planned. The concrete pour for the EcoPark House car park was completed in period.
- 8.28. **Look Ahead:** The 'off-grid' power commissioning will be completed in the next period allowing the photovoltaic panels and ground source heat pumps to be utilised to support commissioning.

Site Wide Enabling works

- 8.29. The Temporary Ash Bay works continue to be successfully managed to enable LEL ash handling operations to progress with limited disruption. Piling for the foundations will be completed in mid-September to allow slab construction to commence.

- 8.30. Infrastructure works in the western area of the site are being procured, planned and phased to minimise disruption to the ERF construction works and LEL operational activities.
- 8.31. The Cadent gas main installation targeted start date has been revised to early 2024 to minimise disruption to other preceding works.

9. DECOMMISSIONING AND DEMOLITION OF THE EXISTING EFW FACILITY

- 9.1. The team is planning for the early market engagement event to be held by the end of October 2023. To date, 21 companies have expressed interest in the project noting the deadline for companies to respond was 15 September 2023. The event outcomes will allow NLWA to better understand market perspectives including risk appetites, site constraints and timings, this will allow for a robust procurement and contracting strategy to be formed.

10. EQUALITIES IMPLICATIONS

- 10.1. There are no impacts on equality to be noted arising from the content of this report.

11. COMMENTS OF THE LEGAL ADVISER

- 11.1. The Legal Adviser has been consulted in the preparation of this report.

12. COMMENTS OF THE FINANCIAL ADVISER

- 12.1. The Financial Adviser has been consulted in the preparation of this report and comments have been incorporated.

Contact Officer:

Martin Capstick
Managing Director
North London Waste Authority
Unit 1b Berol House
25 Ashley Road
London N17 9LJ