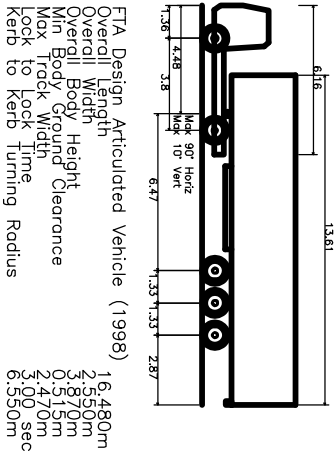
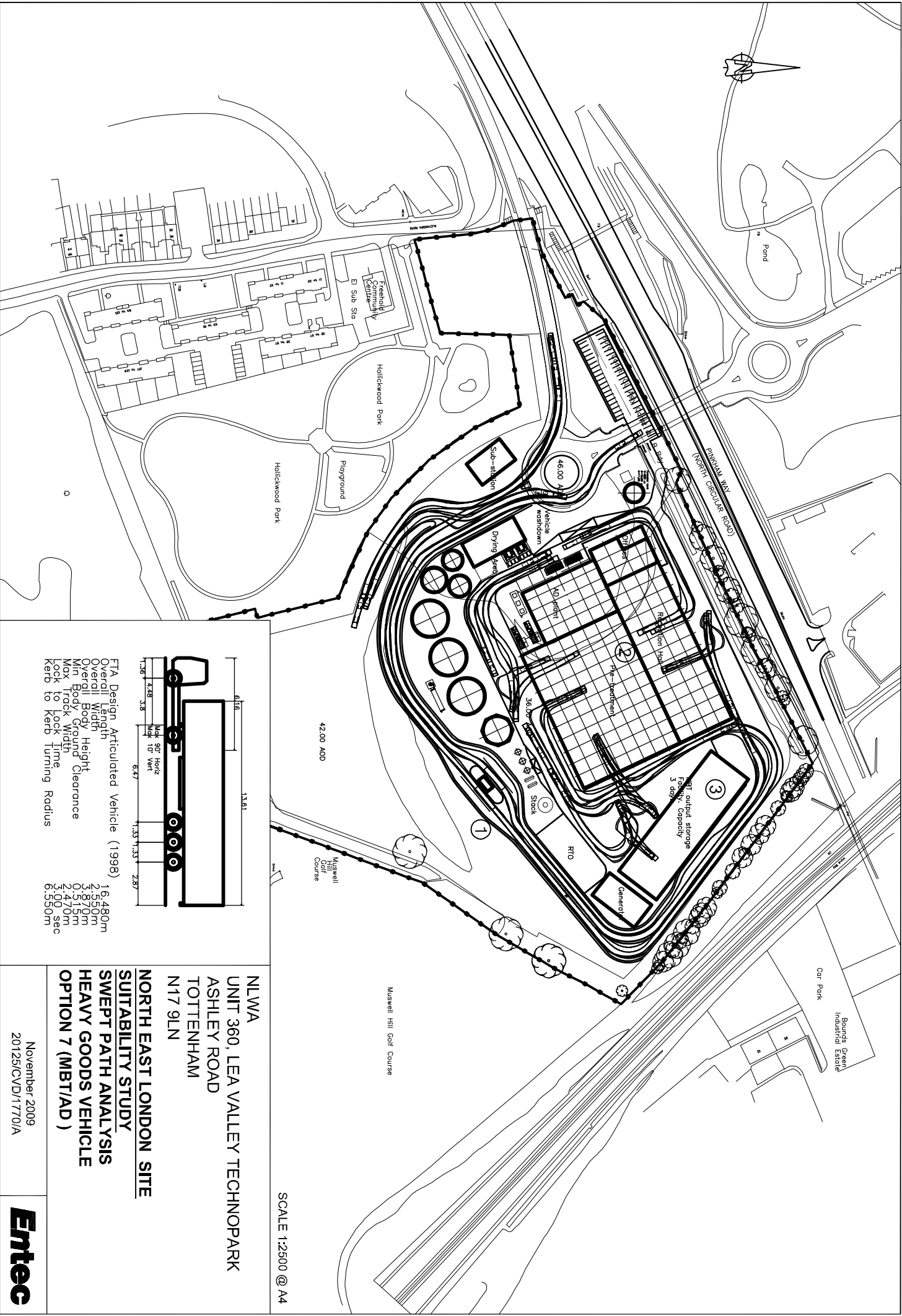


**Appendix II**  
**Site Layout Plans**







FTA Design Articulated Vehicle (1998)  
Overall Length 13.61m  
Overall Width 2.47m  
Overall Height 3.87m  
Wheelbase 4.28m  
Turning Radius 6.550m  
Kerb to Kerb Turning Radius 6.550m

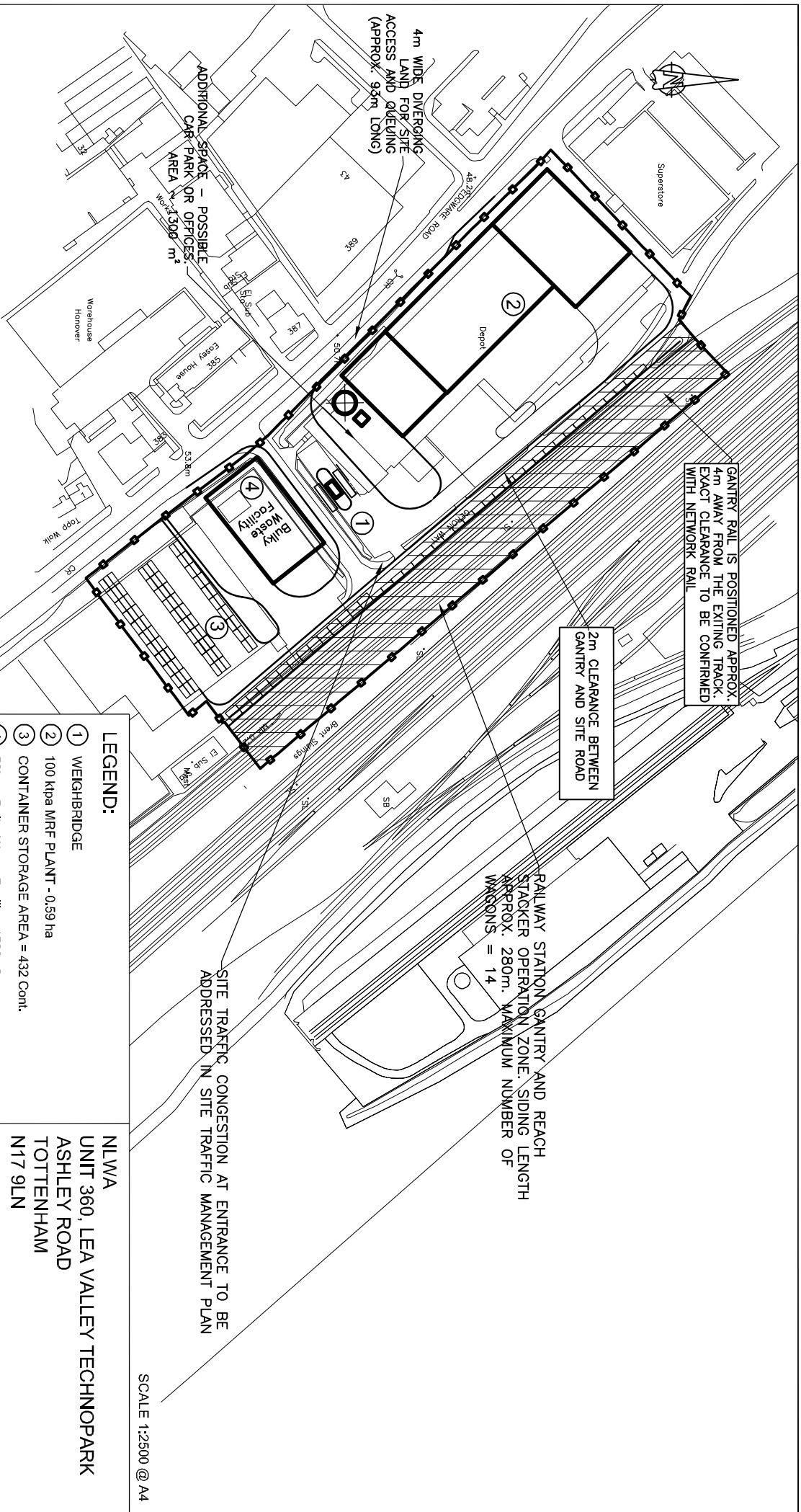
SCALE 1:2500 @ A4

NLWA  
UNIT 360, LEA VALLEY TECHNOPARK  
ASHLEY ROAD  
TOTTENHAM  
N17 9LN  
**NORTH EAST LONDON SITE**  
**SUITABILITY STUDY**  
**SWEPT PATH ANALYSIS**  
**HEAVY GOODS VEHICLE**  
**OPTION 7 (MBT/AD)**

November 2009  
20125/CVD/1770/A



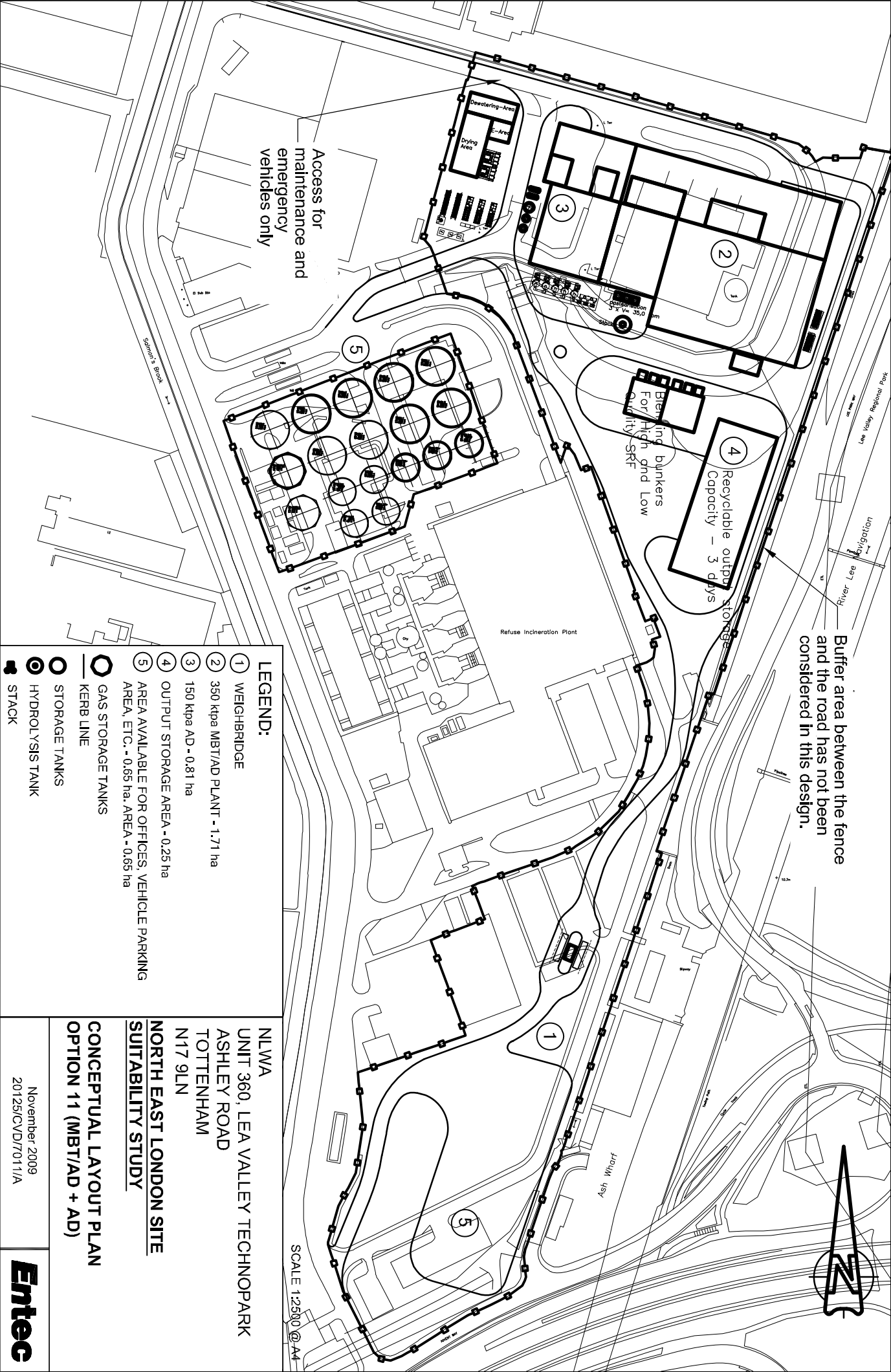


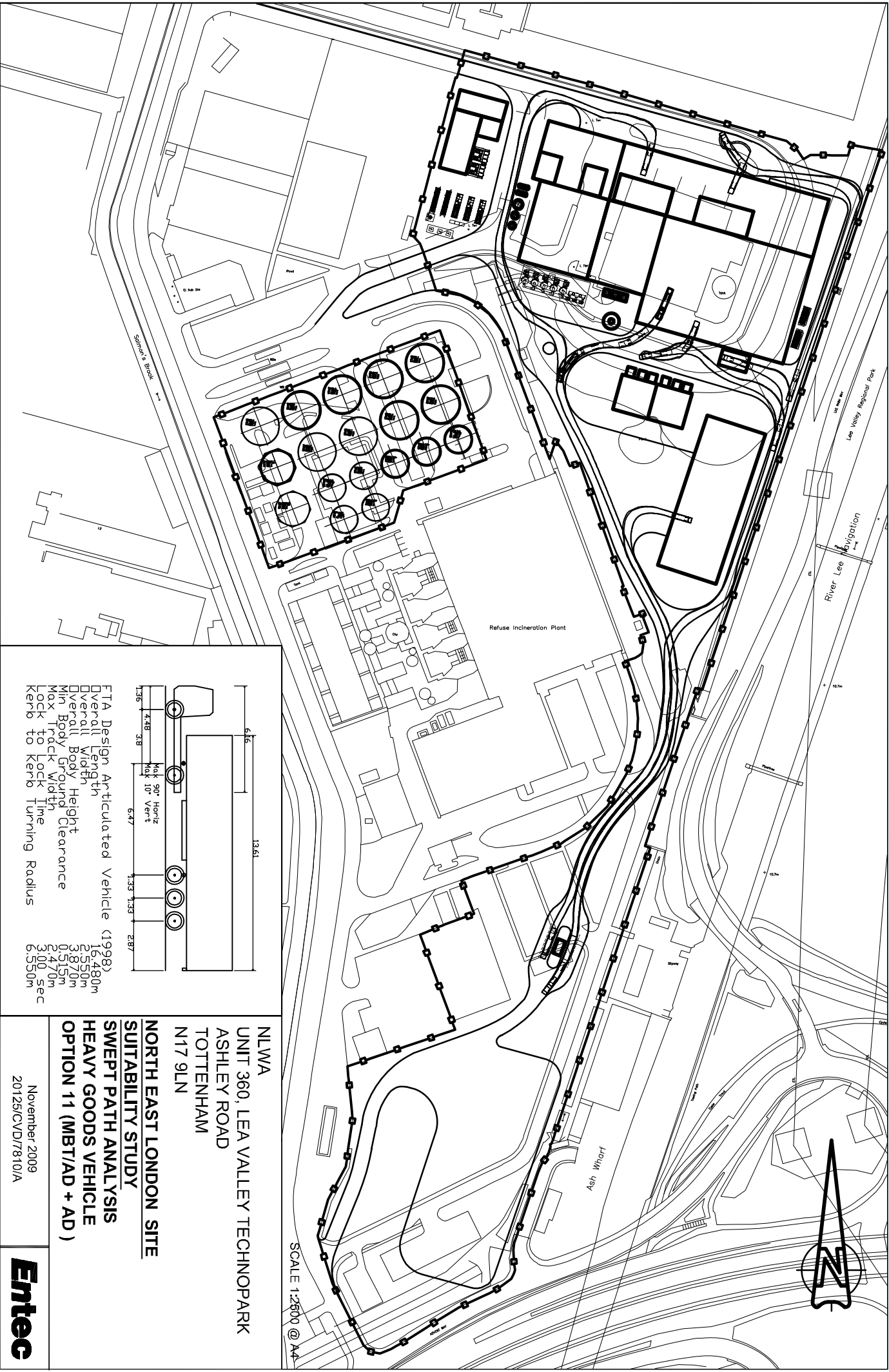


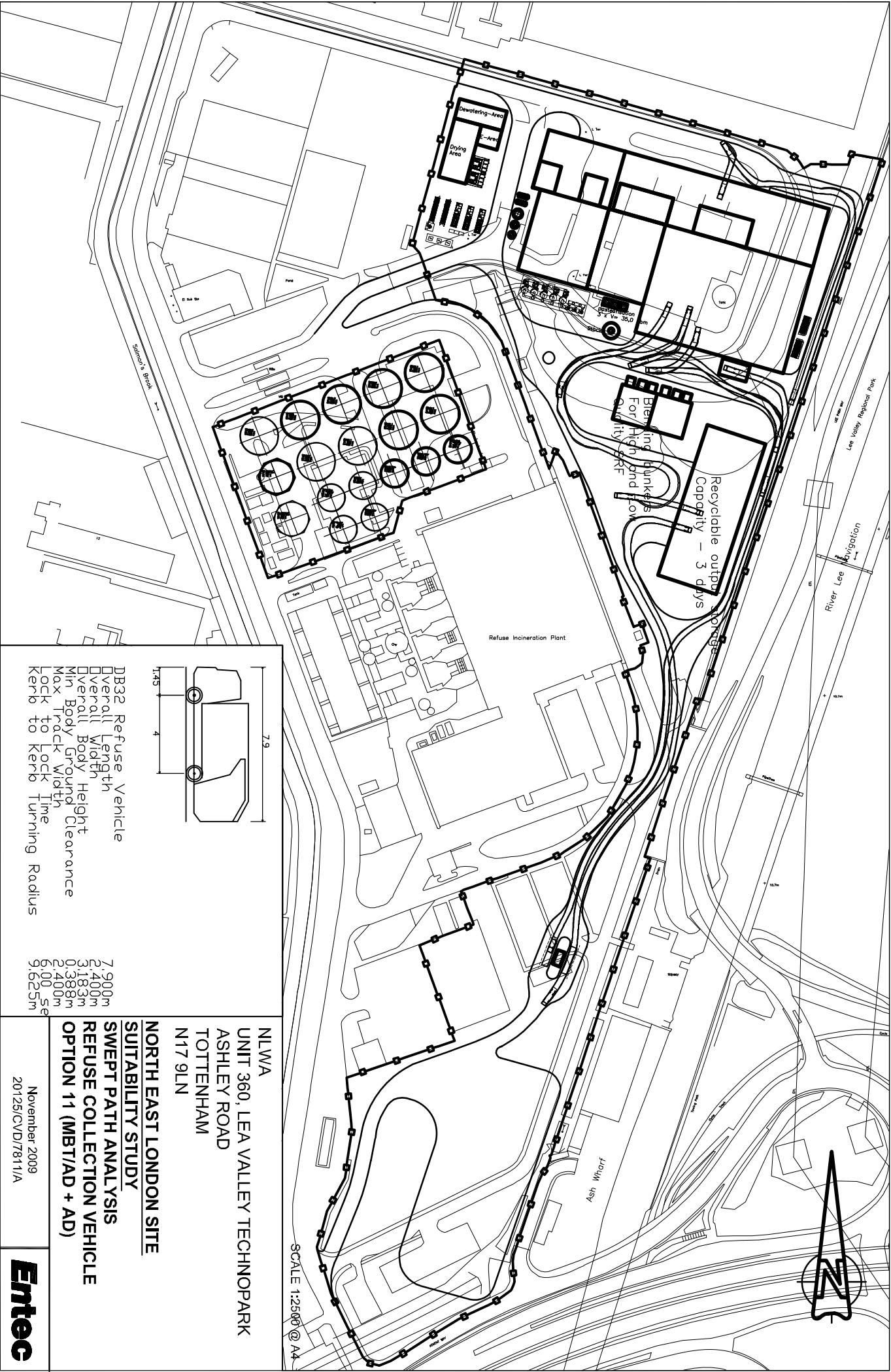


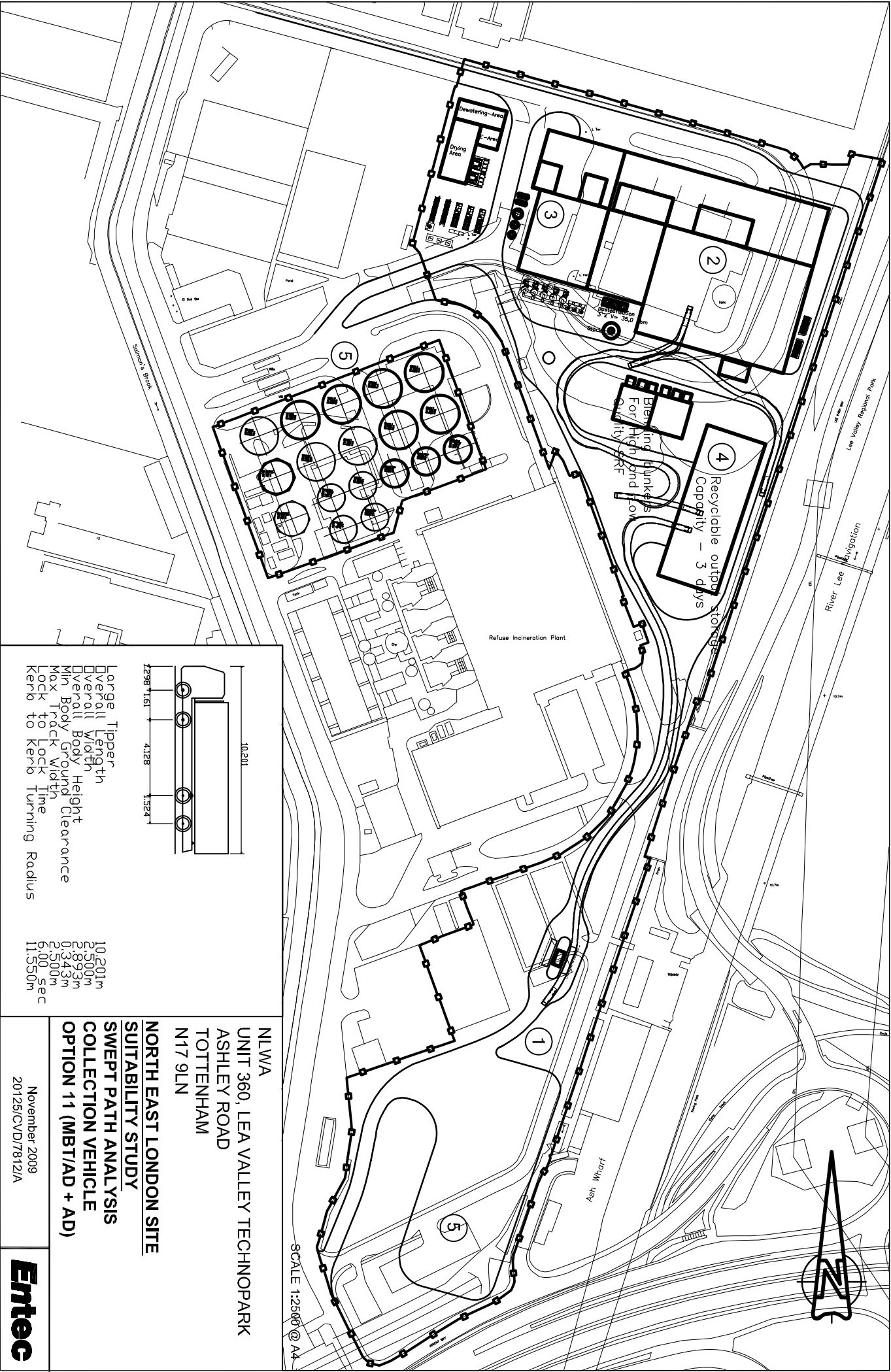


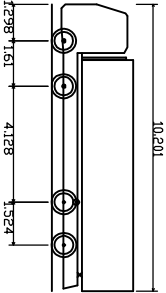










	
Large Tipper	10,201m
Overall Length	2,500m
Overall Width	2,893m
Overall Body Height	0,343m
Min Body Ground Clearance	2,500m
Max Track Width	6.00 sec
Lock to Lock Time	11,550m
Kerb to Kerb Turning Radius	
<b>NLWA</b>	
<b>UNIT 360, LEA VALLEY TECHNOPARK</b>	
<b>ASHLEY ROAD</b>	
<b>TOTTENHAM</b>	
<b>N17 9LN</b>	
<b>NORTH EAST LONDON SITE</b>	
<b>SUITABILITY STUDY</b>	
<b>SWEPT PATH ANALYSIS</b>	
<b>COLLECTION VEHICLE</b>	
<b>OPTION 11 (MBT/AD + AD)</b>	
November 2009	<b>Entec</b>
20125/CVD/78121A	