

Recycling Webinar



Technical Notes



Microphone

All attendees are requested to be in **mute** mode throughout the presentation



Video

All attendees are requested to be in **no video mode** throughout the presentation

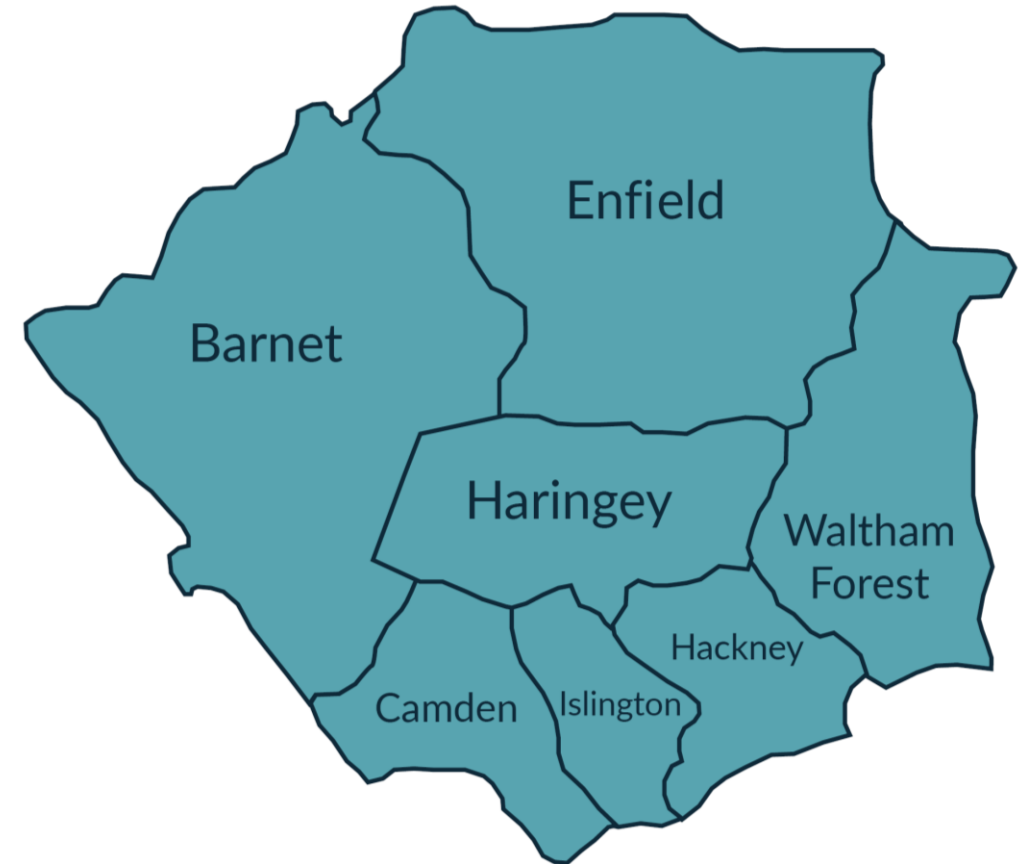


Q&A

Any questions on the presentation/ suggestions to be submitted in the chat

What is NLWA?

- Second largest waste disposal authority in the country
- NLWA's primary function:
 - Arrange for recycling and treatment for most boroughs
 - Manage reuse and recycling centres
 - Promote waste minimisation and recycling



North London Waste Authority (NLWA)

Introduction to Waste Prevention Team



Recycling Stalls, 2019

North London Waste Authority (NLWA)

Introduction to Waste Prevention Team



Swish and Style (Clothes swapping events), 2019



North London Waste Authority (NLWA)

Introduction to Waste Prevention Team



Upcycling show (Furniture upcycling competition), 2019

North London Waste Authority (NLWA)

Introduction to Waste Prevention Team



Save your spuds (Cooking show), 2020

Overview

01 Background

02 Challenges

03 Common Recyclables

04 Other Materials

OVERVIEW

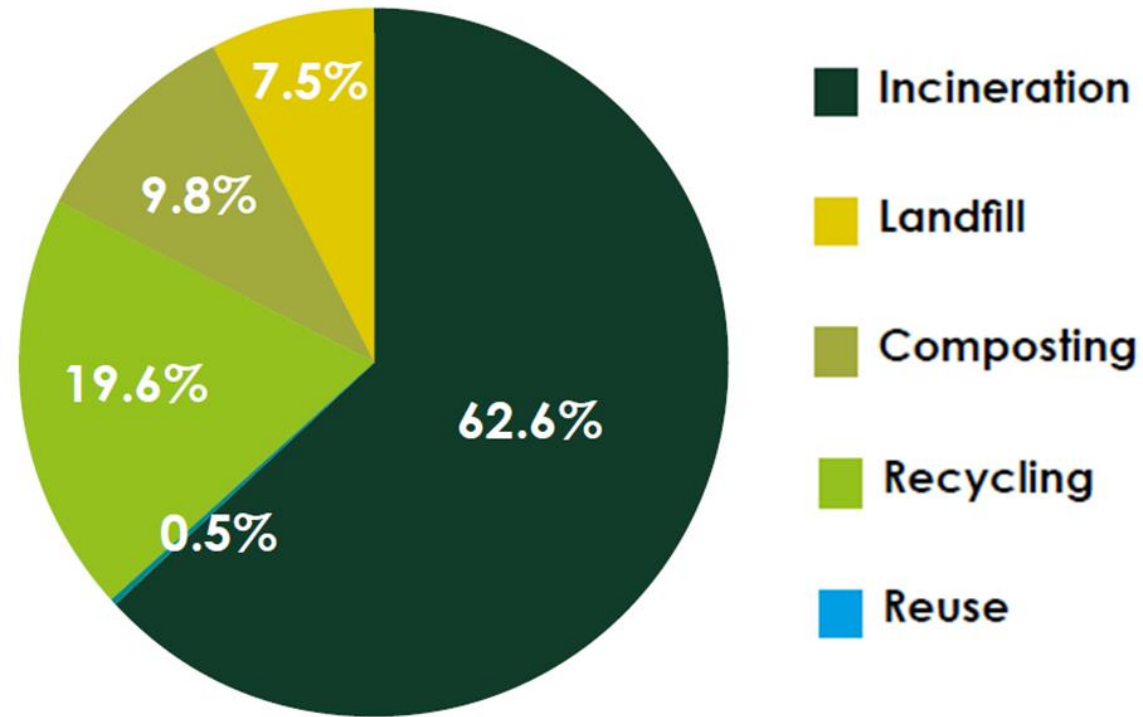
05 Beyond the Bin

06 Why Recycle?

07 What can we all do to help?

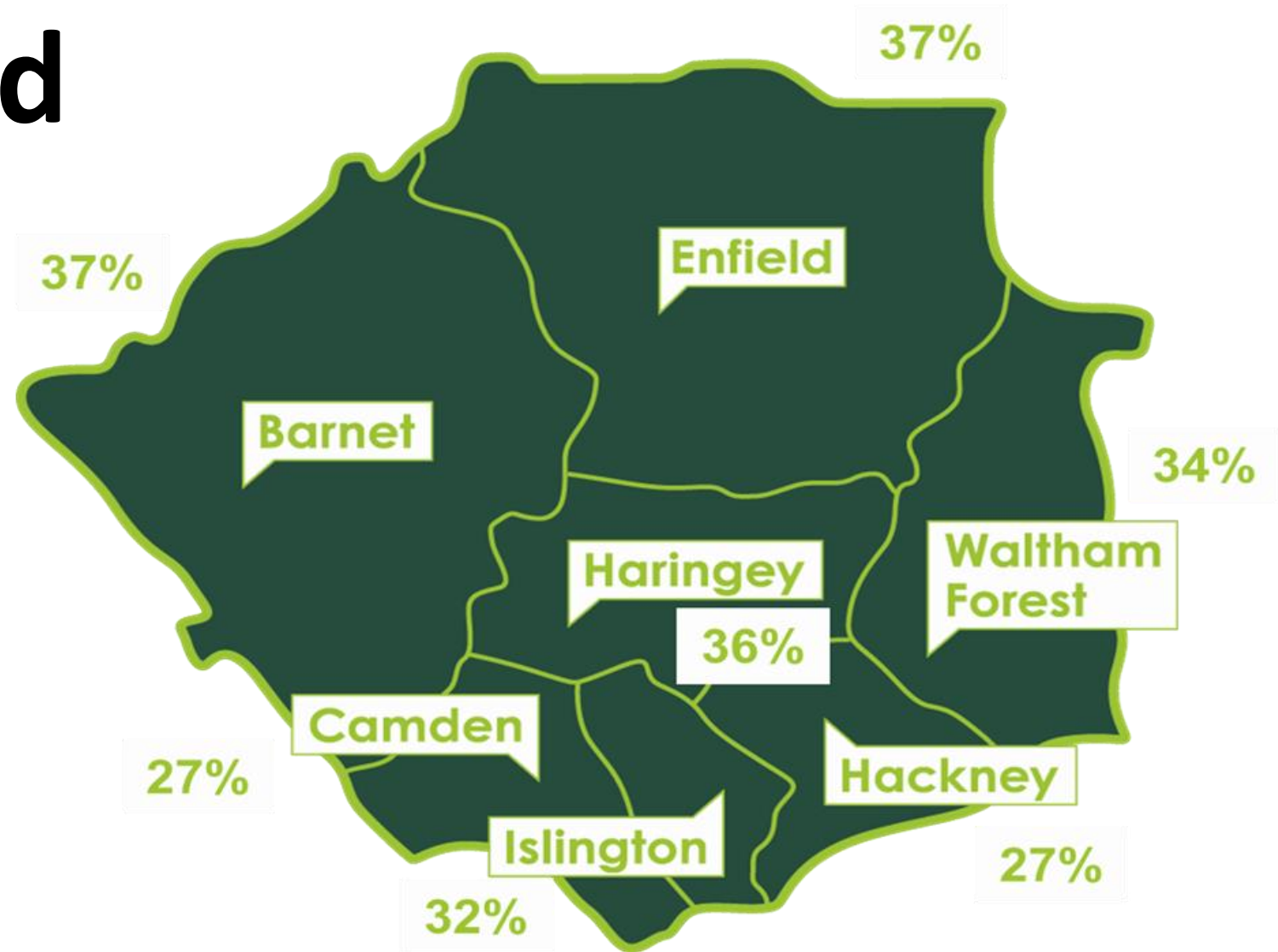
N

Background



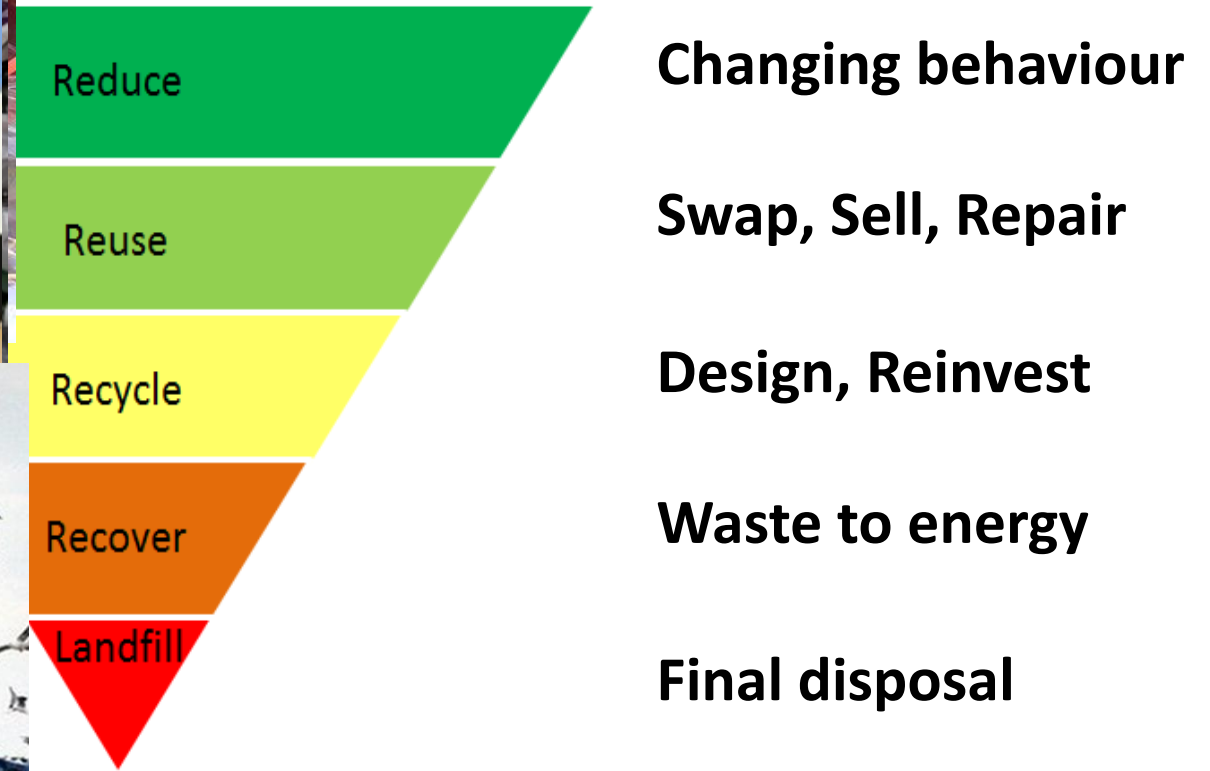
NLWA collects **675,302 tonnes** of household waste per year

Background





Waste Hierarchy



Common Recyclables



Glass Bottles



Plastic food trays



Yoghurt Pots



Aerosols



Common Recyclables



Pizza box (non-greasy parts)



Cardboard toilet roll



**Aluminium
trays/foil**



Envelopes

Other materials



Tooth paste



Cling Film



Crips packaging



Blister pack



Salad Bags



Chocolate packaging

Other materials



Polystyrene



Glittery wrapping paper



Dirty Nappies



Bubble wrap

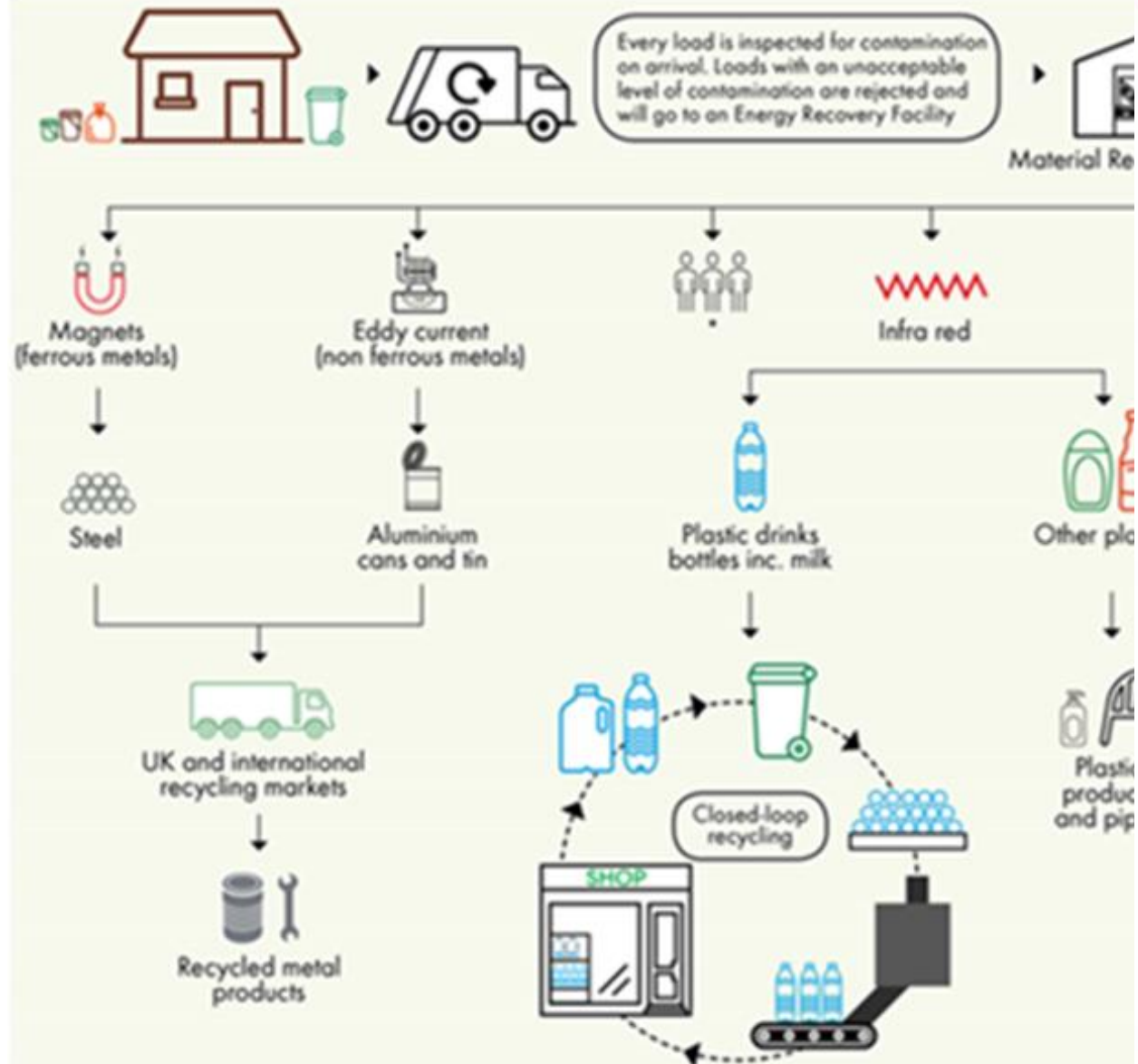


Electrical Appliances



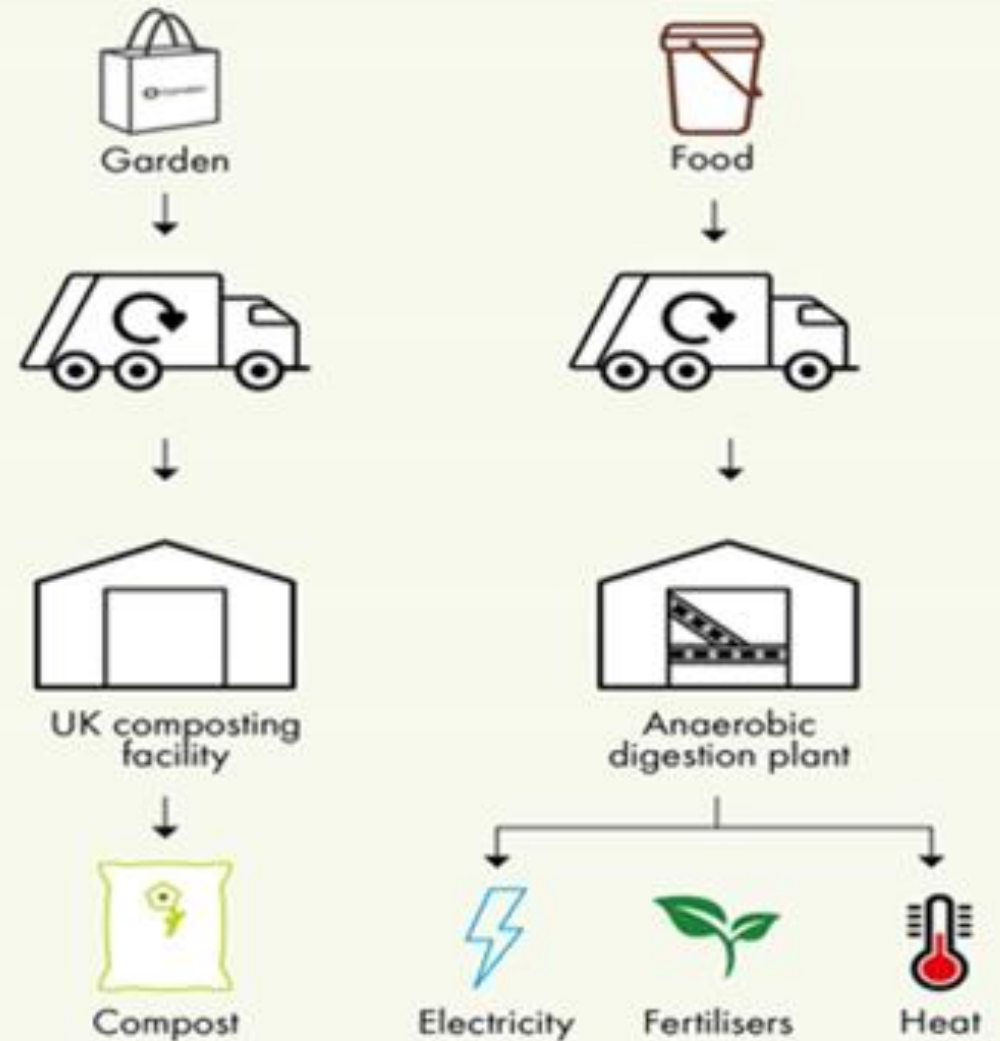
Textile

RECYCLING - MRF



* Whilst the majority of the recovery process is mechanical, it does still require a human touch. Conveyor belts run through sorting cabins where staff hand-pick any incorrect items.

GARDEN AND FOOD



Why Recycle?

- ✓ **Less greenhouse gases** released into the atmosphere
- ✓ Provides a sustainable source of **raw materials** to the industry and avoids the consumption of the Earth's **resources**
- ✓ Is **cheaper** than landfill
- ✓ Less **space required in landfill** sites
- ✓ It consumes **less energy**
- ✓ Embeds the right **values and behaviour** and supports **circular economy**
- ✓ Less waste reaching the waterways and **food chain**

Why Recycle?



Plastics: Garden furniture, toys, clothing



Paper: Egg boxes, tissues, napkins



Glass: Sand for building and construction



Metal: Parts in cars

Challenges

Confusion

Lack of
space

Difficult
Access

Incentives

Concerns
about the
process

Time
consuming

How can you help?

1. Start with Shopping

2. Repair

3. Share

4. Recycle



wastepreventionteam
@nlwa.gov.uk



@connectNLWA



connectNLWA



@connectNLWA



Any Questions

